



HEALTH AND SAFETY POLICY AND PROCEDURES

CONTENTS

GENERAL POLICY

A declaration of our intent to provide and maintain, so far as is reasonably practicable, a safe and healthy working environment and to enlist the support of our employees in achieving these goals.

ORGANISATION AND RESPONSIBILITIES

This section sets out the health and safety responsibilities of key personnel within the organisation.

SAFETY ARRANGEMENTS

This section explains the systems and procedures that will be used to form the basis of our health and safety regime.

SAFETY RECORDS (this section may be in a separate folder)

This section contains;

- An Annual Review of our Health and Safety System and Procedures.
- Periodic Checklists created specifically for individual roles and responsibilities.
- A comprehensive source of records relating to statutory examination periodic inspection and testing of the work equipment and installations used by our organisation. Records relating to Fire Safety Management will be found in your Safety Management System.
- A system for keeping health and safety training records.
- A section for accident and incident reporting, and investigation.

MUSIC STUFF

HEALTH AND SAFETY POLICY

GENERAL POLICY

This Health and Safety Policy contains a plan detailing how we manage our health and safety issues. The policy sets out our commitment to manage risks and provide good standards of health and safety and also to meet our legal duties. Health and safety is an integral part of how we do business as a responsible employer and we have put in place the necessary organisation and arrangements to achieve this. This policy has been initiated after carrying out a full appraisal of our health, safety and welfare requirements and will be reviewed periodically (at least annually).

Health and Safety General Policy Statement

This is a declaration of our intent to provide and maintain, so far as is reasonably practicable, a safe and healthy working environment and to enlist the support of employees towards achieving these goals. The General Policy statement is brought to the attention of all employees by publication in the main policy manual and in the Employee Safety Handbook. It may also be included on notice boards in our premises.

Organisation

This part of the Policy details the health and safety responsibilities of key personnel within our organisation. These responsibilities are fulfilled by completion of various Safety Records, pro-formas and records in relation to on-going maintenance activities, training, accident reporting, and investigation, and actions that have taken place.

Relevant legislation

This page sets out details of the main statutes and regulations affecting health and safety at work that are currently in force.

Safety Arrangements

This part of the Policy explains the systems and procedures in place for managing individual topics or subjects for which our business is responsible.

To assist us with our duty we have retained Peninsula Business Services Limited to provide information and guidance on how these provisions should be managed and recorded.

We accept that we cannot discharge our responsibility for managing health, safety and welfare within the workplace to others outside our employ. Use of the above documents will aid our success in fulfilling these responsibilities.

MUSIC STUFF

HEALTH AND SAFETY GENERAL POLICY STATEMENT

At Music Stuff we recognise our duties under current health and safety legislation and we will endeavour to meet the requirements of this legislation and maintain a safe and healthy working environment. Our Managers and Supervisors are informed of their responsibilities to ensure they take all reasonable precautions, to ensure the safety, health and welfare of those that are likely to be affected by the operation of our business.

Music Stuff recognises its duty to make regular assessment of the hazards and risks created in the course of our business.

We also recognise our duty, so far as is reasonably practicable:

- to meet our legal obligations to maintain safe and healthy working conditions;
- to provide adequate control of the health and safety risks so identified;
- to consult with our employees on matters affecting their health and safety;
- to provide and maintain safe plant and equipment;
- to ensure the safe handling and use of substances;
- to provide information, instruction, training where necessary for our workforce, taking account of any who do not have English as a first language;
- to ensure that all workers are competent to do their work, and to give them appropriate training;
- to prevent accidents and cases of work related ill health;
- to actively manage and supervise health and safety at work;
- to have access to competent advice;
- to seek continuous improvement in our health and safety performance and management through regular (at least annual) review and revision of this policy;
- to provide the resource required to make this policy and our Health and Safety arrangements effective.

We also recognise;

- our duty to co-operate and work with other employers when we work at premises or sites under their control to ensure the continued health and safety of all those at work;
- our duty to co-operate and work with other employers and their workers, when their workers come onto our premises or sites to do work for us, to ensure the health and safety of everyone at work.

To help achieve our objectives and ensure our employees recognise their duties under health and safety legislation whilst at work, we will also inform them of their duty to take reasonable care for themselves and for others who might be affected by their activities. We achieve this by explaining their duty and setting out our company health and safety rules in an Employee Safety Handbook which is made available to every worker employed by us.

In support of this policy a responsibility chart and more detailed arrangements have been prepared.

Signature  Date 01/09/2023

Position Director

The policy is reviewed on a periodic basis.

RECORD OF PERIODIC REVIEW OF THE HEALTH AND SAFETY POLICY

Our Health and Safety General Policy Statement and Safety Arrangements are reviewed periodically. This is a record of these periodic reviews we have undertaken. Our Peninsula Health and Safety Consultant will also review our system and documentation during their routine visits to ensure that they meet current statutory requirements and good practice relevant to our business.

This record should be endorsed by all persons who carry out these periodic reviews (including Peninsula Health and Safety Consultants).

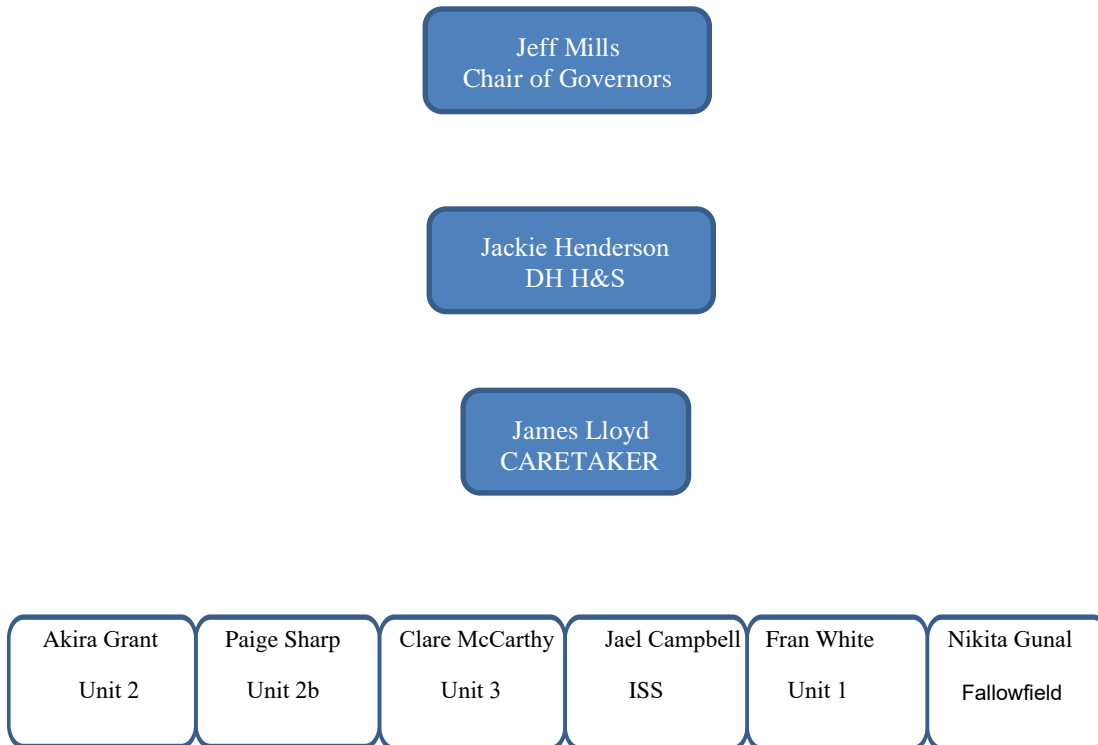
DATE	NAME OF REVIEWER(S)	OUTCOME <i>(State – No change required or explain any required changes)</i>	Where changes are required call the BusinessSafe Advice Service, 0844 892 2785, and record here the date of your call
17/04/23	Lenny Portersmith	Change of centre manager at ISS & ISN	
21/07/2023	Lenny Portersmith	Moved out of Old School house	
01/09/2023	Lenny Portersmith	Annual review	
27/10/2023	Lenny Portersmith	Change of manager at Fallowfield	

ORGANISATION

Health and Safety Management Structure

Although the Chief Executive Officer has overall responsibility for the implementation of this policy day to day responsibility for particular issues has been delegated to key personnel.

The management structure within our business is shown here and the allocation of day to day responsibility for particular health and safety issues is shown in the Responsibility Chart which appears later in this document.



HEALTH AND SAFETY MANAGEMENT RESPONSIBILITIES

The Chief Executive Officer has recognised that they retain overall responsibility for health and safety matters. They also recognise that the business needs to take action in respect of the key points listed here. In managing these matters emphasis is placed on recognising hazards and potential risks and then taking steps to minimise their effects on employees and others.

General

- Provide and resource an effective health and safety management system.
- Provide a suitable means of consultation with employees on health and safety matters.
- Ensure that adequate Employers' Liability Insurance cover is arranged and maintained.
- Ensure that health and safety implications are considered when acquiring new equipment and machinery.
- Ensure that contractors (when employed) are competent and monitored during work.
- Ensure that a process is in place to identify and report hazards.
- Ensure that all employees are provided with appropriate health and safety training.
- Provide measures to protect the health and safety of employees working alone.
- Monitor the health and safety performance of the organisation.

Occupational Health

- Ensure that adequate procedures are in place to identify and address occupational health risks.
- Ensure that the measures required to reduce and control employees' exposure to occupational health risks are in place and used.
- Implement measures to reduce stress within the workplace.

Accidents, Incidents and First Aid

- Record accidents and incidents.
- Complete accident and incident investigations, identify causes and measures for prevention.
- Ensure that applicable injuries, diseases and dangerous occurrences are reported to the Enforcing Authority.
- Ensure that adequate first aid arrangements are in place.

Fire and Emergency Arrangements

Ensure that;

- Adequate arrangements are in place to deal with fire safety at our premises or at our client's premises.
- Employees are aware of the fire and evacuation arrangements and other emergency procedures.
- Emergency equipment is provided, tested and maintained appropriately.
- Adequate Fire Risk Assessments are completed.

Risk Assessment

Ensure that;

- Risk assessments are undertaken and Safe Systems of Work are produced for all activities that pose a significant risk of harm.
- Risk assessments are documented.
- The outcomes of risk assessments are communicated effectively to employees and others.

Premises

- Provide a suitable and safe working environment for employees with adequate welfare facilities.
- Ensure that the fixed electrical installation is adequately installed and maintained.
- Introduce and maintain measures to control and manage the risks posed by asbestos.
- Ensure good housekeeping standards are instigated and maintained.
- Provide suitable and sufficient maintenance of the facilities provided within the workplace.

Equipment

Ensure that;

- All equipment provided by the organisation is suitable and properly used.
- All work equipment is adequately maintained and safe.
- Portable electrical appliances are adequately maintained, inspected and tested.
- Appropriate hand tools are provided and maintained.
- Any Personal Protective Equipment (PPE) provided gives suitable protection, is used and that employees are given information, instruction and training on its use.

Substances

Ensure that;

- All substances are used safely.
- All substances are appropriately stored.

The Responsibility Table on the next page identifies the specific health and safety responsibilities and identifies the individuals they are allocated to. Employees with allocated responsibilities should refer to the associated Safety Arrangements set out later in this policy document.

MONITORING

The operation of this policy and arrangements is actively monitored through the periodic review of our completed Safety Record Forms and also by using Periodic Workplace Checklists. The Chief Executive Officer has overall responsibility for this, but some of the routine tasks may be delegated. We also use an Annual Health and Safety Review form to determine whether our existing health and safety procedures and arrangements are adequate.

People who have delegated responsibilities under this policy will also complete Periodic Checklists of compliance with the policy and procedures arranging for remedial actions to be taken where necessary. The outcomes of these periodic reviews will also be taken into account during the annual review.

Monitoring and review help us to check the effectiveness of our Safety Management System.

RESPONSIBILITY TABLE

This Responsibility Table illustrates the allocation of individual health and safety responsibilities to the personnel / management position identified within its header.

Key

DH - Deputy Head

CM - Centre Manager

CT- Caretaker

Safety arrangements	DH	CM	CT
Managing Safety & Health at Work	✓		
Accident, Incident, Ill Health Reporting and Investigation	✓		
Workplace H&S Consultation - One-to-one	✓	✓	✓
Risk Assessment and Hazard Reporting	✓	✓	✓
Substance & Alcohol Abuse	✓	✓	
Purchasing	✓	✓	
New and Expectant Mothers	✓	✓	
Lone Working	✓		
Health & Safety Training	✓		
Health & Safety of Visitors	✓	✓	✓
Employing Agency and Temporary Staff	✓		
Action on Enforcing Authority Reports	✓		
Equality and Disability Discrimination Compliance	✓	✓	✓
H&S Information for Employees	✓		
Fire Safety - Arrangements and Procedures	✓	✓	✓
First Aid	✓	✓	
Welfare, Staff Amenities, Rest Rooms & the Working Environment	✓	✓	✓
Housekeeping and Cleaning	✓	✓	✓
Building Services	✓		✓
The Control of Hazardous & Non Hazardous Waste	✓	✓	
Access, Egress, Stairs & Floors	✓	✓	✓
Workplace Signs	✓	✓	✓
Working in the Open Air	✓	✓	
Premises	✓		
Electrical Safety	✓		
Office Equipment	✓	✓	
Storage of Chemical Substances & Agents	✓	✓	
Slips, Trips & Falls	✓	✓	✓

Safety arrangements	DH	CM	CT
Special Events	✓	✓	
Safety in Food Preparation Environments	✓	✓	
Manual Handling	✓	✓	✓
Display Screen Equipment & DSE User Eye Tests & Spectacles	✓	✓	
Use of Chemical Agents & Substances	✓	✓	
Asbestos at Work-No Survey & No Off Site Risk	✓		
Stress in the Workplace	✓	✓	
Aggression & Violence in the Workplace	✓	✓	
Educational Visits	✓	✓	
Schools & Nurseries	✓	✓	
Project Safety for Travelling & Multi-Site Workers	✓		✓
Contractor Control & Management	✓		✓

Note:

People with delegated responsibilities for health and safety issues should ensure that the required risk assessments and safety records are completed, either by them or by others and that the required control measures are implemented when work activities take place.

Where more than one person has been assigned responsibility to a particular subject, each should ensure that they have fulfilled their responsibilities in the areas under their control and completed the relevant records. Together they need to check that collectively the organisation has covered all aspects of safety management for the subject.

TASK	DURATION	RESPONSIBILITY	QA
Fire alarm service	Annually	Jackie Henderson	Jeff Mills (Governor)
Fire extinguisher check	Monthly	Jackie Henderson	Jeff Mills
Fire extinguisher service	6 Monthly	Jackie Henderson	Jeff Mills
Fire door check	Monthly	Care Taker	Jeff Mills
Emergency lighting check	Monthly	Jackie Henderson	Jeff Mills
Emergency lighting service	Annually	Jackie Henderson	Jeff Mills
Break Glass point check	Weekly	Centre manager	Jeff Mills
Fire evacuation test	Termly	Centre manager	Jeff Mills
Fire awareness training	Annually	Jackie Henderson	Jeff Mills
H&S sign checks	Monthly	Care Taker	Jeff Mills
Legionella tests	Annually	Jackie Henderson	Jeff Mills
PAT testing	Annually	Jackie Henderson	Jeff Mills

RELEVANT LEGISLATION

In most cases Health and Safety legislation requires common sense, reasonably practicable precautions to avoid the risk of injury or ill-health at work. Our Health and Safety Management System does not quote specific legal references; giving instead the information and detail of what is required in practice to secure compliance. If the guidance and requirements of our Health and Safety Management System are adopted compliance with the legal requirements will be achieved.

This page sets out, for the record, details of the main statutes and regulations affecting health and safety at work that were in force when this policy was prepared. The BusinessSafe Online Reference Library contains a similar list which will always be up to date. The document is titled 'Health and Safety Legislation (UK)'.

Not every piece of the legislation will apply to our operation on a day to day basis, but we need to be aware of them should circumstances change.

Further detail and access to the specific wording of each of these legal requirements is available from the BusinessSafe 24 Hour Advice Service on 0844 892 2772.

- Building Regulations 2000
- Chemicals (Hazard Information and Packaging for Supply) Regulations 2009
- Classification, Labelling and Packaging of Substances and Mixtures Regulations 2008
- Confined Spaces Regulations 1997
- Construction, Design and Management Regulations 2007 – until 5th April 2015
- The Construction (Design and Management) Regulations 2015 – after 6th April 2015
- Control of Artificial Optical Radiation at Work Regulations 2010
- Control of Asbestos Regulations 2012
- Control of Lead at Work Regulations 2002
- Control of Major Accident Hazard Regulations 2005
- Control of Noise at Work Regulations 2005
- Control of Substances Hazardous to Health Regulations 2002 as amended
- Control of Vibration at Work Regulations 2005
- Corporate Manslaughter and Homicide Act 2007
- Dangerous Substances and Explosive Atmospheres Regulations 2002
- Electricity at Work Regulations 1989
- Employers Liability (Compulsory Insurance) Regulations 1998 as amended 2008
- Employment of Women, Young Persons and Children Act 1920.
- Equality Act 2010
- Export and Import of Dangerous Chemicals Regulations 2005
- Furniture and Furnishings (Fire) (Safety) Regulations 1988 amended 1993
- Gas Appliances (Safety) Regulations 1995 as amended
- Gas Safety (Installation and Use) Regulations 1998
- Gas Safety (Management) Regulations 1996
- Hazardous Waste Regulations 2005
- Health and Safety Offences Act 2008
- Health and Safety at Work etc. Act 1974
- Health and Safety (Consultation with Employees) Regulations 1996
- Health and Safety (Display Screen Equipment) Regulations 1992
- Health and Safety (First Aid) Regulations 1981
- Health and Safety Information for Employees Regulations 1989 as amended
- Health and Safety (Safety Signs and Signals) Regulations 1996
- Health and Safety (Sharp Instruments in Healthcare) Regulations 2013.
- Health and Safety (Training for Employment) Regulations 1990
- Ionising Radiations Regulations 1999
- Lifting Operations and Lifting Equipment Regulations 1998

Music Stuff

- Lifts Regulations 1997
- Management of Health and Safety at Work Regulations 1999 as amended
- Manual Handling Operations Regulations 1992 as amended
- Notification of Cooling Towers and Evaporative Condensers Regulations 1992
- Notification of Employment of Persons Order 1964
- Personal Protective Equipment Regulations 1992 as amended
- Pressure Systems Safety Regulations 2000
- Provision and Use of Work Equipment Regulations 1998
- Radiation (Emergency Preparedness and Public Information) Regulations 2001
- The Registration, Evaluation, Authorisation and Restriction of Chemicals Regulations 2007 (REACH)
- Regulatory Reform Fire Safety Order 2005
- Reporting of Injuries, Diseases and Dangerous Occurrences Regulations 2013
- Safety Representatives and Safety Committees Regulations 1977
- Work at Height Regulations 2005 as amended
- Workplace (Health, Safety and Welfare) Regulations 1992
- Working Time Regulations 1998 and 2003

SAFETY ARRANGEMENTS TABLE

Ref. Number	Title	Publication Date
SA1-1	Managing Safety & Health at Work	v1
SA1-3	Accident, Incident, Ill Health Reporting and Investigation	v2
SA1-5	Workplace H&S Consultation - One-to-one	v1
SA1-6	Risk Assessment and Hazard Reporting	v2
SA1-8	Substance & Alcohol Abuse	v1
SA1-9	Purchasing	v1
SA1-11	New and Expectant Mothers	v2
SA1-13	Lone Working	v1
SA1-14	Health & Safety Training	v1
SA1-15	Health & Safety of Visitors	v1
SA1-19	Employing Agency and Temporary Staff	v1
SA1-21	Action on Enforcing Authority Reports	v1
SA1-22	Equality and Disability Discrimination Compliance	v2
SA1-23	H&S Information for Employees	v1
SA 2-1	Fire Safety - Arrangements and Procedures	v2
SA3-1	First Aid	v2
SA3-2	Welfare, Staff Amenities, Rest Rooms & the Working Environmen	v2
SA3-3	Housekeeping and Cleaning	v2
SA3-5	Building Services	v3
SA3-6	The Control of Hazardous & Non Hazardous Waste	v2
SA3-9	Access, Egress, Stairs & Floors	v2
SA3-11	Workplace Signs	v1
SA3-13	Working in the Open Air	v1
SA3-15	Premises	v2
SA4-1	Electrical Safety	v1
SA4-4	Office Equipment	v1
SA4-5	Storage of Chemical Substances & Agents	v1
SA4-8	Slips, Trips & Falls	v1
SA4-9	Special Events	v1
SA4-35	Safety in Food Preparation Environments	v1
SA5-9	Manual Handling	v3
SA5-11	Display Screen Equipment & DSE User Eye Tests & Spectacles	v1
SA5-14	Use of Chemical Agents & Substances	v2
SA5-16H	Asbestos at Work-No Survey & No Off Site Risk	v1
SA5-18	Stress in the Workplace	v1
SA5-19	Aggression & Violence in the Workplace	v1
SA6-15	Educational Visits	v1
SA6-16	Schools & Nurseries	v1
SA7-1	Project Safety for Travelling & Multi-Site Workers	v1
SA7-2	Contractor Control & Management	v1

MANAGING SAFETY AND HEALTH AT WORK

We recognise the business benefits that can accrue from the effective management of safety and health at work. To obtain these benefits for our company we have recognised the need for an effective management system and have taken steps to put such a system in place.

We have done this by;

- Nominating an individual member of the senior management to take responsibility for managing safety and health at work.
- Providing adequate resources
- Providing such health and safety information, instruction and training for all workers as is necessary for them to be able to work without risk to their health or safety so far as is reasonably practicable.
- Recording and analysing all reportable accidents, minor accidents, near-miss incidents and dangerous occurrences.
- Reporting reportable accidents within the statutory timescales (information is in our Guidance Notes).
- Providing and recording relevant training.
- Routinely reviewing the operation of our reporting system.
- Having access to competent health and safety advice.

The person nominated with responsibility for overseeing this organisation's arrangements for managing safety and health at work is identified within the Responsibility Table of our Health and Safety Policy.

MANAGING SAFETY AND HEALTH AT WORK

Action Plan

In order to meet our legal obligations to manage safety and health at work we need to;

1. Identify a person to take responsibility for managing health and safety in our business activities.
2. Ensure that the responsible person understands their duties and responsibilities.
3. Provide adequate training for that person.
4. Give that person the authority required and the resource necessary for them to fulfil their role.
5. Plan our management of health and safety at work, set up and maintain systems that will deliver a satisfactory health and safety performance.
6. Explain to our workers, Supervisors and Managers the nature of our arrangements for managing health and safety at work.
7. Ensure that all our workers are aware of the need to make concerns about health and safety at work known and report accidents, incidents and cases of work-related ill health to their Managers.
8. Review our arrangements from time to time to ensure that they are fully understood and are operating correctly.

Advice and guidance on the reporting requirements and reporting system can be found in our Guidance Note 1-1 – Managing Safety and Health at Work.

ACCIDENT, INCIDENT, ILL-HEALTH REPORTING AND INVESTIGATION

We encourage our employees to report all personal injury accidents, near miss incidents (dangerous occurrences) and ill-health that happen in the course of their work so that we can investigate the causes, learn from experience and improve our management of health and safety. We also use the information to help us meet our obligations under the legislation requiring accidents to be reported to the Enforcing Authority.

We do this by;

- Nominating an individual member of staff to be responsible for investigating, recording and reporting accidents, incidents and cases of work related ill-health.
- Having accident, incident and work related ill-health reporting procedures.
- Recording and analysing all reportable accidents, minor accidents, near-miss incidents (dangerous occurrences) and work related ill-health.
- Reporting reportable accidents, dangerous occurrences and work related ill-health within the statutory timescales (information is in our Guidance Notes).
- Developing and implementing investigation protocols and policies.
- Providing and recording relevant training.
- Ensuring that those carrying out investigations are competent.
- Routinely reviewing the outcome of investigations and the operation of our reporting system.

The personnel responsible for reporting accidents, dangerous occurrences and work related ill-health are identified within the Responsibility Table of our Health and Safety Policy.

ACCIDENT, INCIDENT, ILL-HEALTH REPORTING AND INVESTIGATION

Action Plan

In order to meet our legal obligations to manage effectively the health and safety of our workforce and report accidents, incidents and cases of work related ill health to the Enforcing Authority we need to;

1. Identify people to be responsible for investigating the cause of injuries, incidents and ill-health and to manage our reporting arrangements.
2. Ensure that the people nominated with responsibility for these arrangements have the knowledge and experience to carry out investigations and operate the system effectively.
3. Provide suitable training for those who don't.
4. Create the systems and make sure all members of our workforce, including managers and supervisors are aware of and understand them.
5. Provide an accident book, implement the procedures, and ensure that they are followed in practice.
6. When investigating consider;
 - a. the time and date of the event, the prevailing weather conditions and local lighting.
 - b. what was happening or what the injured person and any witnesses were doing.
 - c. risk assessments or safe systems of work for the task being carried out and details of relevant training given to the injured party and others involved.
 - d. obtaining witness statements, where possible.
 - e. making a sketch of the accident area, include accurate measurements, if appropriate.
 - f. taking photographs of the site; record any unusual or causal features present.
 - g. making observational notes on the potential causation, noting features, equipment defects or work practice that may have contributed to the eventual outcome.
 - h. the underlying, as well as the immediate, causes of the event.
7. Keep a written record of investigations.
8. Review the causes of the events that have occurred to consider whether similar events could be prevented by the introduction of reasonably practicable control measures.
9. Monitor and review the operation of this procedure from time to time to check that the investigation and reporting procedures are understood, are being followed in practice and that lessons learned are being put into practice.

For information and advice see;

Guidance Note 1-3 – Accident, Incident and Ill-Health Reporting.

Guidance Note 1-4 – Accident Investigation.

WORKPLACE HEALTH AND SAFETY CONSULTATION

We have a duty to consult with our workforce on matters affecting their health, safety and welfare whilst at work. To meet this obligation we have established a process for Managers to consult with employees and elected safety representatives about work-related health, safety and welfare issues. We also use this system to deliver simple safety messages and rules through short tool-box talks.

We do this by:

- Nominating Supervisors and Managers to organise and hold consultation meetings and tool box talks.
- Arranging scheduled formal consultation meetings or tool box talks between Managers, elected representatives and employees (see also Guidance Note – Workplace Health and Safety Consultation).
- Developing and implementing consultation procedures.
- Implementing and undertaking where necessary a 'one to one' consultation process with individual employees. Details of such sessions will be recorded.
- Taking and keeping minutes of consultation meetings, making them available to all staff.
- Being seen to listen and act on issues and concerns raised during 'one to one' consultation meetings.

The management and supervisory personnel responsible for implementing and operating this consultation process are identified within the Responsibility Table of our Health and Safety Policy.

WORKPLACE HEALTH AND SAFETY CONSULTATION

Action Plan

To set up a system for consulting with our workforce on health and safety at work matters we need to;

1. Ensure that the people nominated with responsibility for these arrangements have the knowledge and experience to operate the system effectively.
2. Provide suitable training for those who don't.
3. Create the system and make sure it is known to all members of our workforce.
4. Consider as part of the system;
 - a. recognising and involving representatives of the workforce from all levels.
 - b. permitting employee representatives to have time off to attend relevant health and safety training.
 - c. provide training for employee representatives if necessary or beneficial to the process.
 - d. scheduling health and safety as an agenda item for Consultation meetings.
 - e. implementing and undertaking 'one to one' consultation sessions with individual employees.
 - f. formally recording the outcomes of all consultation meetings and retaining these records.
 - g. making the outcomes of consultation meetings available to all those employees affected by them.
5. Explain these arrangements to our workforce. Ensure they are understood.
6. Implement the procedure and ensure that it is followed in practice.
7. Monitor and review the operation of this procedure from time to time to check that our workforce is consulted about health and safety matters that affect them whilst at work.

Advice and guidance on consultation arrangements and procedures can be found in our Guidance Note 1-5 – Workplace Health and Safety Consultation.

RISK ASSESSMENT AND HAZARD REPORTING

We have a duty to assess the significant risks arising out of our business activities and for specific areas of concern. We have a duty to implement the findings of these risk assessments to ensure the safety, health and welfare of our employees and others who may be affected by our work activity.

To support this process and our management of health and safety we encourage our employees to report all hazards observed in the course of their work, so that potential risks can be identified and the appropriate action taken.

We do this by:

- Nominating senior staff members to oversee our risk assessment process and hazard reporting procedure.
- Ensuring that risk assessments are undertaken by competent, trained personnel.
- Developing risk assessments procedures, Safe Systems of Work and measures to effectively control the work activities within our work premises.
- Explaining the results of risk assessments to our workforce.
- Implementing the findings of the risk assessments, procedures, strategies, Safe Systems of Work and control measures.
- Implementing hazard reporting procedures and explaining them to our workforce.
- Recording and analysing hazards when they occur and investigating corrective and preventive measures.
- Employees and others following our procedures, control measures and Safe Systems of Work.
- Regular review of existing risk assessments and identifying the need for additional assessments.
- Providing and recording relevant training.
- Routinely reviewing the operation of our systems.

The personnel responsible for the above measures are identified within the Responsibility Table of our Health and Safety Policy.

We use the experience from operating these arrangements to make improvements to our safety, health and welfare management system.

RISK ASSESSMENT AND HAZARD REPORTING

Action Plan

For our risk assessment process to be sufficiently robust to protect the health, safety and welfare of our employees and those affected by our work activity we need to;

1. Nominate a senior manager to take responsibility for identifying hazards and managing and co-ordinating risk assessment.
2. Appoint and train sufficient numbers of staff in the process of risk assessment.
3. Systematically identify the hazards to which our workforce and others are exposed.
4. Provide a means for the workforce to identify and report hazards or potential hazards to their managers.
5. Consider the risks from those hazards, however recognised, identifying people at risk.
6. Evaluate the risks and decide if further precautions are required.
7. In significant cases, record our findings.
8. Implement those findings.
9. Involve Managers and workers in identifying hazards and carrying out risk assessments.
10. Explain the results of risk assessments to any affected staff and detail any new precautions or systems of work they need to follow.
11. Review risk assessments on a regular basis, commensurate to the risk.
12. Review our arrangements from time to time to ensure that they are fully understood and operating correctly.

For information and advice see;

Guidance Note 1-6 – Hazard Reporting.

Guidance Note 1-10 – Risk Assessment.

SUBSTANCE and ALCOHOL ABUSE

We have a duty to protect the safety, health and welfare of our employees and others from the hazards that may arise as a result of workers abusing alcohol and other substances.

We do this by:

- Nominating senior staff members to coordinate and manage our substance and alcohol abuse policies and provision.
- Developing and implementing strategies, policies and procedures.
- Providing competent accredited trained personnel to provide support and counselling services.
- Employees and others adhering to the contents of our procedures and policies.
- Providing and recording relevant training
- Monitoring and reviewing our systems; using our experience of operating these arrangements we aim to make improvements to the way we manage the risks from substance abuse.

The personnel responsible for the above measures are identified within the Responsibility Table of our Health and Safety Policy.

SUBSTANCE and ALCOHOL ABUSE

Action Plan

To protect workers and others from the risks of working with people who abuse substances and alcohol we need to;

1. Develop a policy for dealing with workers whose abuse of substances and alcohol put other people at work at risk.
2. Consider;
 - a. The problem should be treated as an illness.
 - b. The problem can be successfully treated.
 - c. Disciplinary action is a last resort.
 - d. Sufferers may find it difficult to admit to a problem.
 - e. It is easier to take action in the early stages of the condition.
 - f. Staff should be able to identify early signs of problems.
 - g. Advice is available from many organisations including local Health Authorities.
3. Develop a policy and procedure based on these considerations.
4. Explain these arrangements to our workforce. Ensure they are understood.
5. Provide training and information, where required, for staff nominated with responsibility so that they are able to identify workers with substance abuse problems.
6. Implement the procedure, identify who is to provide support and counselling services and ensure that it is followed in practice.
7. Ensure that staff, particularly Managers and Supervisors, remains aware of our procedure although we hope and expect it will not be required in practice.
8. Monitor and review the operation of this procedure whenever it has been used, making changes identified as necessary or beneficial.

Information and advice on this subject can be found in our Guidance Note 1-8 - Substance and Alcohol Abuse.

PURCHASING

We have a duty to ensure the safety, health and welfare of our employees and others who enter our premises and we have systems in place to protect these groups from any adverse effects of all plant, equipment, supplies and substances that we purchase to support our work activities.

Our systems consist of:

- Nominating senior staff members to identify and manage the organisation's safe purchasing requirements.
- Developing and implementing a purchasing policy, identifying the safest available options.
- Ensuring that this policy is implemented by trained and competent staff.
- Ensuring that the equipment purchased is safe, adequate and suitable for its purpose, and that safety devices and other control measures are fitted.
- Providing adequate and sufficient personal protective equipment to employees.
- Providing relevant training.
- Monitoring and reviewing our systems; using our experience of operating these arrangements we aim to make improvements to our purchasing policy.

The personnel responsible for the above measures are identified within the Responsibility Table of our Health and Safety Policy.

PURCHASING

Action Plan

To ensure that we purchase work equipment and substances that are safe, so far as is reasonably practicable, when used by our workers and others we need to;

1. Identify who in our company is authorised to purchase equipment, supplies and substances. Consider whether they need specific training for certain health and safety conditions.
2. Consider where we buy equipment and substances.
3. Obtain Manufacturer's Safety Data Sheets for the substances we purchase and consider the hazard and risk data provided.
4. When buying equipment specify in purchase orders that it complies with relevant European or National Standards.
5. On receipt of new equipment check that where relevant it bears compliance markings.
6. Involve workers in developing a procedure based on these considerations.
7. Explain these arrangements to our workforce. Ensure they are understood.
8. Provide training where required and information for staff nominated with responsibility.
9. Implement the procedure and ensure that it is followed in practice.
10. Monitor and review the operation of this procedure from time to time, making changes identified as necessary or beneficial.

Information and advice about health and safety on this subject can be found in our Guidance Note 1-9 – Purchasing.

NEW AND EXPECTANT MOTHERS

We have a duty to protect the health of new and expectant mothers from hazards that might be present in the workplace. We also have a duty to assess the risks to women of child bearing age from our activities and inform them of any potential risks that might affect a pregnancy.

We do this by:

- Nominating senior staff members to identify and assess the hazards which pose risk to new and expectant mothers.
- Developing and implementing systems and procedures that will protect all women of child bearing age from risks to unborn children.
- Developing and implementing systems and procedures that will protect new and expectant mothers and their children from hazards and risks in our workplace or risks from the work activity.
- Considering the personal needs of each new and expectant mother.
- Ensuring that the assessments are sensitively carried out by competent, trained personnel.
- Implementing the findings of each assessment.
- New and expectant mothers and other workers following agreed procedures and control measures.
- Recording our assessments and agreed plans.
- Monitoring and reviewing our systems; using our experience of operating these arrangements we aim to make improvements to the way we manage potential risks to new and expectant mothers.

The personnel responsible for the above measures are identified within the Responsibility Table of our Health and Safety Policy.

NEW AND EXPECTANT MOTHERS

Action Check List

To protect the health of new and expectant mothers and women of child bearing age we should;

1. Assess the risks that our business activities may have on women of child bearing age and any potential foetus.
2. Inform the workforce of those risks.
3. Reduce those risks so far as is reasonably practicable.
4. Assess the risks to any worker who notifies us that they are pregnant or are returning to work after having given birth.
5. Consider factors such as;
 - a. Substances to which they might be exposed.
 - b. The size and shape of their workstation.
 - c. Posture.
 - d. Vibrations.
 - e. Environmental factors.
 - f. Ability to stand or sit for long periods.
 - g. Night working.
 - h. Lifting and carrying.
 - i. Noise levels.
 - j. Welfare arrangements.
6. Discuss the results of the risk assessment with the worker.
7. Consider how to reduce risks.
8. Find alternative work for the worker if it is not possible to reduce risks in her current job to an acceptable level. Alternatively give her paid absence from work.
9. Implement our decisions.
10. Make sure Supervisors and other employees are aware and understand the measures to be taken.
11. Review the risk assessment as pregnancy develops or as the pregnant worker makes any concerns or problems known.

Advice and guidance on managing the health and safety of new and expectant mothers can be found in Guidance Note 1-11.

LONE WORKING

Our company has a duty to ensure the safety, health and welfare of our workforce whilst at work. That duty extends to employees who travel during the course of their work and those who work away from our core premises.

We do this by:

- Nominating senior staff members to consider the health, safety and welfare of lone workers.
- Identifying situations where lone working is required which affect our employees.
- Making an assessment of the risks to members of our workforce who are or may become lone workers.
- Developing and implementing control measures and procedures to ensure their health and safety whilst at work.
- Providing sufficient funding support to enable the development and implementation of procedures, risk assessments and control measures.
- Ensuring that procedures and control measures are in place for lone working situations.
- Ensuring that identified equipment needs are met and training on their use is given.
- Ensuring that the content of the procedures and risk assessments are made available to all staff.
- Providing and recording training.
- Monitoring and reviewing our systems; using our experience of operating these arrangements we aim to make improvements to the way we manage the risks from lone working.

The personnel responsible for the above measures are identified within the Responsibility Table of our Health and Safety Policy.

LONE WORKING

Action Plan

To protect the health, safety and welfare of our workers who work alone, whether it is because they are a mobile worker, because they work away from our core operating site or for other reasons, we need to;

1. Identify who among our workforce is or is potentially a lone worker.
2. Assess the risks to those identified as lone workers.
3. Identify the control measures already in place and any additional measures that may be required.
4. Consider, as part of our assessment, issues such as;
 - a. Where they work.
 - b. Are they at risk because they handle cash?
 - c. Are they at risk because they are work at a remote and hazardous installation?
 - d. Are they at greater risk in the winter months?
 - e. Are they at risk from a violent client or a member of the client's family?
 - f. Are they likely to cut corners because they are not under direct supervision?
 - g. Are they at risk because of health issues?
 - h. Are they at risk because a significant part of their day is spent driving?
 - i. Are they at risk because they work exceptional hours?
 - j. Are they at risk because they do not have access to welfare or first aid facilities?
 - k. Mobile phone signals.
5. Keep a written record of significant risk assessments and the control measures and systems of work adopted.
6. Make sure that Managers and Supervisors understand the procedures and arrangements. Consider whether they need any training.
7. Explain our system and arrangements to the workforce. Ensure they are understood and provide further training where necessary.
8. Implement the procedure and ensure that it is followed in practice.
9. Monitor and review the operation of this procedure from time to time and whenever an employee reports an accident or case of ill health attributable to working alone, make changes to the procedure identified as necessary or beneficial.

Advice on managing the risks from lone working can be found in Guidance Note 1-13.

HEALTH AND SAFETY TRAINING

We have a duty to protect the health, safety and welfare of our employees whilst they are at work and others who might be affected by our work activities. Among other specific arrangements we need to be sure that our workforce is trained to recognise hazards and risks and what they need to do to eliminate, reduce and avoid risk.

We do this by:

- Nominating senior staff members to manage Health and Safety training.
- Making an assessment of the risks to our workforce and others from an inadequately trained workforce.
- Developing and implementing training policies, programmes and arrangements.
- Ensuring that the management of the policy, programmes and arrangements are undertaken by competent, trained personnel.
- Managing our activities to ensure that employees are adequately trained for the variety of tasks which they may be required to do.
- Providing and recording relevant training.
- Monitoring and reviewing our systems; using our experience of operating these arrangements we aim to make improvements to the way we manage our Health and Safety training programmes.

The personnel responsible for above measures are identified within the Responsibility Table of our Health and Safety Policy.

HEALTH AND SAFETY TRAINING

Action Plan

In developing and implementing training policies, programmes and arrangements we need to:

1. Assess our work activity to identify where and when workers or the public may be exposed to hazards and risks.
2. Where we identify hazards we need to consider the associated risks and the ability of staff to control them and then to identify whether their knowledge of and training about control measures is adequate.
3. Identify any jobs that require workers to have received specific health and safety training.
4. Identify the systems already in place to provide training and any additional measures that may be required.
5. Consider procedures and practices including ;
 - a. Plant and machinery.
 - b. Chemical and chemical processes.
 - c. Works transport.
 - d. Working at height.
 - e. Lifting machines and equipment.
 - f. Electrical safety.
 - g. Mundane work.
 - h. Occasional work activities.
 - i. Training needs analyses for individuals.
6. Involve the workforce in making these assessments of our needs.
7. Develop procedures, programmes and practices tailored to our workplace.
8. Explain these arrangements to the workforce, their Supervisors and Managers. Ensure they are understood and provide further training where necessary.
9. Implement the procedures and ensure that they are followed in practice.
10. Monitor and review the operation of the procedures from time to time making changes identified as necessary or beneficial.

Advice and guidance on the control of Health and Safety Training can be found in Guidance Note 1-14.

HEALTH AND SAFETY OF VISITORS

We have a duty to ensure the health and safety of members of the public who come into our workplace.

We do this by:

- Nominating senior staff members to identify and risk assess the workplace hazards which pose risk to visitors.
- Making an assessment of the risks to visitors.
- Providing a visitors' book to track visitors present in our premises.
- Developing visitor procedures and control measures.
- Implementing visitor procedures and control measures.
- Ensuring that risk assessments are undertaken by competent, trained personnel.
- Regularly inspecting the premises to identify any new processes, personnel or changes to the building's structure that could pose new risk to visitors.
- Ensuring employees and others adhere to the contents of procedures, control measures and Safe Systems of Work.
- Providing relevant information and training.
- Monitoring and reviewing our systems; using our experience of operating these arrangements we aim to make improvements to the way we manage the risks to visitors.

HEALTH AND SAFETY OF VISITORS

Action Plan

To protect visitors to our workplace we need to:

1. Assess our work activity to identify where and when the public may be exposed to hazard and risk.
2. Identify risks that visitors might face when at our workplace.
3. Where risks to the health and safety of visitors is identified or reported, assess those risks to identify where control measures are required.
4. Identify any control measures already in place and any additional measures that may be required.
5. Consider among other issues;
 - a. Where visitors go, when they go there, why they go there and what they do when they get there.
 - b. Floor coverings
 - c. Slippery floors
 - d. Chemical hazards
 - e. Electrical hazards
 - f. Condition of stairs etc
 - g. Machinery hazards.
 - h. Workplace transport.
6. Involve the workforce in making these assessments; use their experience.
7. Develop procedures, programmes and practices for ensuring visitor safety that are tailored to our workplace.
8. Explain these arrangements to the workforce, their Supervisors and Managers. Ensure they are understood and provide further training where necessary.
9. Implement the procedure and ensure that it is followed in practice.
10. Monitor and review the operation of this procedure from time to time and whenever a visitor suffers a work related injury, making changes to the procedure identified as necessary or beneficial.

Advice and guidance on the Health and Safety of visitors can be found in Guidance Note 1-15.

EMPLOYING AGENCY AND TEMPORARY STAFF

We have a duty to ensure the health, safety and welfare of agency and temporary staff who are employed on our premises.

We do this by:

- Nominating senior staff members to liaise with recruitment agencies and coordinate the selection process of suitable, competent agency staff / temps.
- Identifying any specific risks to these temporary or agency staff whilst they are employed on our premises.
- Developing and implementing procedures and control measures necessary to protect the health and safety of temporary and agency to effectively control the risk posed.
- Assessing the abilities and health and safety of agency or temporary staff at work in the job for which we employ them.
- Ensuring that any assessment of these people is carried out by competent, trained personnel.
- Ensuring that all workers including the agency or temporary workers are aware of the procedures and measures in the event of an emergency.
- Ensuring that agency staff and temporary workers comply with our specific company rules.
- Monitoring and reviewing our systems; using our experience of operating these arrangements we aim to make improvements to the way we manage the risks to agency and temporary workers.

The personnel responsible for the above measures are identified within the Responsibility Table of our Health and Safety Policy.

EMPLOYING AGENCY AND TEMPORARY STAFF

Action Plan

To protect the health, safety and welfare of agency and temporary staff which we employ we need to:

1. Liaise with the agency and set out our specific requirements including the nature of work for which agency workers are required and any specific training requirements or qualifications for agency workers.
2. Assess our work activity to identify where and when agency or temporary workers may be at risk.
3. Where risks are identified make an assessment of those risks identifying control measures that should be in place.
4. Identify the control measures already in place and the additional measures that may be required.
5. Consider among other issues;
 - a. detailed job descriptions for the employment agencies.
 - b. skill levels required.
 - c. language issues.
 - d. cultural differences.
 - e. training (job specific and induction)
 - f. supervision.
 - g. provision of personal protective equipment
6. Involve the workforce in making these assessments.
7. Develop procedures, programmes and practices tailored to our workplace.
8. Explain these arrangements to the workforce, their Supervisors and Managers. Ensure they are understood and provide further training where necessary.
9. Implement the procedure and ensure that it is followed in practice.
10. Monitor and review the operation of this procedure from time to time and whenever an agency or temporary worker suffers injury or work related ill-health, making changes to the procedure identified as necessary or beneficial.

Advice and guidance on the health and safety at work of agency and temporary staff can be found in Guidance Note 1-16.

ACTION ON ENFORCEMENT AUTHORITY REPORTS

We recognise the benefits that will accrue from early action following receipt of reports from the Enforcement Authority in regard to health safety and welfare issues. To obtain these benefits we have recognised the need for an effective management system and have taken steps to be able to action such reports.

We have done this by;

- Nominating an individual member of the senior management who will coordinate actions required to meet the requirements of Enforcement Authorities.
- Providing adequate resources either financial or human to be able to meet the requirements of the Enforcing Authority.
- Routinely reviewing the operation of our reporting system.
- Having access to competent health and safety advice.

The person nominated with responsibility for overseeing this organisation's arrangements for compliance with Enforcing Authority requirements is identified within the Responsibility Table of our Health and Safety Policy.

ACTION ON ENFORCEMENT AUTHORITY REPORTS

Action Plan

In order to meet our legal obligations to provide adequate health and safety information to employees we need to;

1. Identify a person who will coordinate actions required to meet the requirements of Enforcement Authorities.
2. Ensure that the responsible person understands their duties and responsibilities.
3. Provide adequate training for that person.
4. Give that person the authority required and the resource necessary for them to fulfil their role.
5. Ensure that our workers are aware of the need to make concerns about health and safety known and report accidents, incidents and cases of work-related ill health to their Managers.
6. Review our arrangements from time to time to ensure that they are fully understood and are operating correctly.

Advice and guidance on this subject can be found in our Guidance Note 1-21 Action On Enforcement Authority Reports.

EQUALITY, DISABILITY DISCRIMINATION AND COMPLIANCE

We recognise the benefits that will accrue from planned and carefully considered arrangements in regard to the equal treatment of all people and health, safety and welfare issues. To obtain these benefits we have recognised the need for an effective management system and have taken steps to be able to successfully manage disability in the workplace.

We have done this by;

- Nominating an individual member of the senior management who will coordinate actions required to meet the requirements of disadvantaged and vulnerable persons
- Providing adequate resources either financial or human to be able to reasonable adjustments to our workplace(s)
- Allowing employees to nominate safety representatives who will coordinate issues arising from their colleagues in respect of health, safety and welfare.
- Providing adequate resources
- Providing such health and safety information, instruction, and training for all workers as is necessary for them to be able to work without risk to their health or safety or welfare so far as is reasonably practicable.
- Recording and analysing all reportable accidents, minor accidents, near miss incidents and dangerous occurrences.
- Providing and recording relevant training
- Routinely reviewing the operation of our reporting system.
- Having access to competent health and safety advice.

The person nominated with responsibility for overseeing this organisation's arrangements for compliance with statutory requirements in this respect is identified within the Responsibility Table of our Health and Safety Policy.

EQUALITY, DISABILITY DISCRIMINATION AND COMPLIANCE

Action Plan

In order to meet our legal obligations to avoid disability discrimination to employees we need to;

1. Identify a person who will coordinate actions required to meet the requirements of legislation that requires us to treat all people equally.
2. Ensure that the responsible person understands their duties and responsibilities.
3. Provide adequate training for that person.
4. Give that person the authority required and the resource necessary for them to fulfil their role.
5. Review our arrangements from time to time to ensure that they are fully understood and are operating correctly.

Advice and guidance on this subject can be found in our Guidance Note 1 – 22 - Equality, Disability Discrimination and Compliance

HEALTH AND SAFETY INFORMATION FOR EMPLOYEES

We recognise the benefits that will accrue from the provision of effective information regarding health safety and welfare activities to our employees. To obtain these benefits we have recognised the need for an effective management system and have taken steps to provide adequate information to employees and others.

We have done this by;

- Allowing employees to nominate safety representatives who will coordinate issues arising from their colleagues in respect of health, safety and welfare.
- Providing adequate resources
- Providing such health and safety information, instruction, and training for all workers as is necessary for them to be able to work without risk to their health or safety or welfare so far as is reasonably practicable.
- Recording and analysing all reportable accidents, minor accidents, near miss incidents and dangerous occurrences.
- Providing and recording relevant training
- Routinely reviewing the operation of our reporting system.
- Having access to competent health and safety advice.

The person nominated with responsibility for overseeing this organisation's arrangements for provision of information to employees is identified within the Responsibility Table of our Health and Safety Policy.

HEALTH AND SAFETY INFORMATION FOR EMPLOYEES

Action Plan

In order to meet our legal obligations to provide adequate health and safety information to employees we need to;

1. Identify a person to take responsibility for ensuring that adequate information is provided to employees.
2. Ensure that the responsible person understands their duties and responsibilities.
3. Provide adequate training for that person.
4. Give that person the authority required and the resource necessary for them to fulfil their role.
5. Identify the most effective methods by which information will be circulated to the employees.
6. Display the required health and safety 'What you should know' poster and complete the information on the poster.
7. Provide information to our employees in regard to their responsibilities and essential safety rules.
8. Explain to our workers, supervisors and managers the nature of our arrangements for managing health, safety and welfare.
9. Ensure that our workers are aware of the need to make concerns about health and safety known and report accidents, incidents and cases of work-related ill health to their Managers.
10. Review our arrangements from time to time to ensure that they are fully understood and are operating correctly.

Advice and guidance on this subject can be found in our Guidance Note 1-23 Health and Safety Information for Employees.

FIRE SAFETY – ARRANGEMENTS AND PROCEDURES

We have a legal duty to implement and maintain a fire safety programme, for assessing and controlling the risks from an outbreak of fire and for the provision of fire warnings, fire fighting equipment, emergency lighting, emergency signs, adequate means of escape and evacuation procedures. We have put in place arrangements to meet these responsibilities and to identify and reduce the risks associated with fire and emergency situations.

Our arrangements consist of:

- Nominating a 'responsible person' to coordinate fire and emergency arrangements and take responsibility for the completion and regular review of a Fire Risk assessment.
- Identifying fire risks and potential emergency situations and who may be affected.
- Assessing the level of risk and recording the information in the Fire Risk Assessment and emergency plan
- Implementing procedures and control measures to mitigate the risks posed.
- Liaising with the emergency services, informing them of any workplace or process hazards that have the potential to create fire or emergency situations.
- Developing Safe Systems of Work to reduce the potential incidence of fire and emergency situations.
- Adequate provision of tested and inspected fire fighting and warning equipment.
- Practicing and recording fire evacuation procedures.
- Delivering training on the emergency plan, the Fire Risk Assessment and on the use of any fire fighting equipment provided.
- Reviewing our system.

The personnel responsible for fire and emergency arrangements are identified within the Responsibility Table of our Health and Safety Policy.

We use the experience of operating these systems to make improvements to our safety, health and welfare management system.

FIRE SAFETY - ARRANGEMENTS AND PROCEDURES

Action Plan

To protect workers and others from the risk of fire we need to develop a comprehensive fire safety programme. We need to;

1. Nominate and train a person to be our competent and Responsible Person for fire safety matters.
2. Prepare and maintain an up to date fire risk assessment in respect of our premises and processes. If we have hazards which make our premises high fire risk we will need to get assistance from experts.
3. Provide and maintain (record details) sufficient and suitable fire alarm systems, means of escape, fire fighting equipment, emergency lighting and emergency signs.
4. Develop procedures for the safe and speedy evacuation to a place of relative safety of workers and others in the event of a fire or other emergency.
5. Where appropriate consult with the Fire Service in making these provisions and in developing our site specific arrangements and procedures.
6. Consider;
 - a. Fire prevention. Storage of flammables, waste disposal, open flames etc.
 - b. Potential sources of ignition including use of flammable substances and process related fire hazards.
 - c. Maintenance of fire alarms, smoke detectors, automatic door closers.
 - d. Maintenance of fire doors and escape routes.
 - e. Emergency procedures – fire wardens, fire and evacuation drills and safe assembly points.
 - f. Maintenance of fire extinguishers and fire fighting equipment.
 - g. Liaison with fire service and assisting the fire service in the event of a fire.
 - h. Providing and maintaining fire safety signs and notices.
 - i. Record keeping.
 - j. Safe means of shutting down electric, gas and fuel supplies.
7. Always purchase robust equipment suitable for our intended use.
8. Explain the Fire Safety Programme, Arrangements and Procedures to our Managers, Supervisors, workforce and any other people who need to know what they are; landlords, neighbours, visitors, residents etc. Ensure they are understood.
9. Provide training where required and information for staff nominated with responsibilities.
10. Implement the Programme and ensure that it is followed in practice.
11. Carry out fire alarm and evacuation drills to check that the Programme works in practice.
12. Monitor and review the operation of all aspects of the Fire Safety Programme at least twice a year and whenever a fire related incident happens, making changes to the fire risk assessment, arrangements and procedures identified as necessary or beneficial.

Advice and guidance on the development of a Fire Safety Programme can be found in the fire safety section of the health and safety management system.

FIRST AID

We have a duty to provide suitable first aid arrangements for our staff whilst at work and visitors who may be affected by our activities. We have taken steps to provide first aid arrangements that meet this requirement.

We do this by:

- Nominating a Senior Manager to identify our needs and ensure continuing arrangements for first aid provision.
- Assessing the reasonable level of first aid provision required for our business at our workplace and for travelling staff.
- Recruiting sufficient members of staff to undertake first aid training as a first aider or appointed person, as appropriate.
- Arranging approved training for those people and keeping records of their training.
- Providing adequate numbers of trained personnel to be available at all times during business hours.
- Providing and maintaining sufficient quantities of first aid equipment and consumables.
- Displaying names and locations of first aid trained personnel or appointed persons in prominent positions throughout the premises.
- Routinely reviewing our first aid arrangements for suitability and ensuring that where we have trained first aiders qualifications are up to date.

FIRST AID

Action Plan

To ensure that we meet our obligations to provide suitable first aid arrangements for our staff whilst at work and visitors who may be affected by our activities we need to take the following action;

1. Assess our business activity to identify the level of first aid provision that will be necessary.
2. Consider issues including;
 - a. The likely severity of foreseeable work-related accidents.
 - b. The number of people likely to be in the workplace.
 - c. The nature of health and safety risks at the workplace.
 - d. The location and accessibility of the workplace.
 - e. Whether the need is for trained first aiders or appointed persons.
3. Keep a written record of our assessment and conclusions.
4. Explain our assessment and conclusions to our workforce.
5. Identify workers to be trained and take responsibility for administering first aid.
6. Provide approved training for appointed first aiders.
7. Keep records of this training and ensure qualifications are kept up to date.
8. Make sure our arrangements are understood and the responsible people known to all workers, Supervisors and Managers.
9. Provide suitable facilities and consumables for delivering first aid at our workplace.
10. Monitor and review from time to time the operation of this procedure in the light of experience making changes to our system identified as necessary or beneficial.

Information and advice on First Aid provision can be found in our Guidance Note 3-1 – First Aid.

WELFARE, STAFF AMENITIES, REST ROOMS and the WORKING ENVIRONMENT

We are obliged to make and maintain arrangements for welfare and the provision of a safe and healthy working environment for our workforce whilst they are at work. This includes a duty to provide restrooms where work is arduous or conducted in a hostile environment and for the welfare of new and expectant mothers.

We do this by;

- Nominating senior staff members to oversee our provision and maintenance of welfare facilities and a safe working environment.
- Maintaining our workplace including buildings and fixtures in good order and according to required standards.
- Providing welfare facilities that are fit for purpose and include adequate hot, cold and drinking water, sanitary conveniences, hand washing facilities, facilities for meal breaks, sufficient light, heat and ventilation.
- Implementing housekeeping, cleaning and maintenance regimes.
- Providing and recording relevant instruction and training.
- Regular monitoring and review of our arrangements and facilities to ensure that they remain sufficient and are adequately maintained.

The personnel responsible for these measures are identified within the Responsibility Table of our Health and Safety Policy.

WELFARE, STAFF AMENITIES, REST ROOMS and the WORKING ENVIRONMENT

Action Plan

To ensure that we make the proper and necessary arrangements for welfare and to provide a safe working environment for our workforce we need to;

1. Consider the arrangements we have in place to provide for the welfare of our workforce whilst at work and to provide a safe working environment.
2. Assess the specific welfare arrangements, including rest rooms and catering areas, that we have provided against both minimum legal requirements and what might reasonably be expected by law; particularly where work may be arduous or in a hostile environment.
3. Consider among other relevant issues;
 - a. our worksite, the condition of the buildings;
 - b. temperature, ventilation and lighting in the workplace;
 - c. the use of chemical, biological and radiological substances;
 - d. the condition of floors, walls and ceilings;
 - e. traffic routes;
 - f. sanitary and washing facilities;
 - g. clothing accommodation, changing rooms and rest rooms;
 - h. drinking water and the means for making hot drinks and heating food;
 - i. workers in isolated locations;
 - j. the needs of nursing and expectant mothers;
 - k. the heating and cleaning of rest rooms and welfare facilities.
4. Involve workers in these considerations and in the development and maintenance of facilities and arrangements based on these considerations.
5. Keep a written record of significant assessments, actions identified and taken.
6. Provide information and any necessary training to employees, Managers and any staff nominated with responsibility to ensure that our arrangements and provisions are understood.
7. Monitor welfare arrangements and facilities to ensure that they remain sufficient, are maintained in a good clean condition and are fit for purpose.

For information and advice, please see;

Guidance Note 3-2, Welfare and the Working Environment.

Guidance Note 3-8, Staff Amenities and Rest Rooms.

Guidance Note 1-11, New and Expectant Mothers.

HOUSEKEEPING and CLEANING

We have a duty to ensure the safety, health and welfare of our employees and others who enter our premises by keeping it in a clean, tidy and sanitary condition.

We do this by:

- Nominating senior staff members to oversee the provision and management of housekeeping facilities and arrangements. Where necessary, making a risk assessment of the risks posed to our workforce and others from housekeeping activities.
- Developing and implementing cleaning procedures and associated safe systems of work where required.
- Ensuring that competent, trained personnel undertake the management of the policy, cleaning regimes and control measures.
- Carrying out regular housekeeping audits.
- Providing and using personal protective equipment where necessary.
- Managing our activities to ensure that employees and others use the control measures provided and follow our policies and procedures.
- Providing instruction and where necessary training which is recorded.
- Regular monitoring and review of our arrangements; to ensure that the workplace is kept clean and that our cleaning arrangements are adequate.
- Employees and others adhering to the contents of the procedures and safe systems of work.

The personnel responsible for the above measures are identified within the Responsibility Table of our Health and Safety Policy.

HOUSEKEEPING and CLEANING

Action Plan

To ensure that we keep our workplace tidy and in a clean, sanitary condition we need to;

1. Assess all areas of the workplace and work activities to determine the cleaning requirements for each area.
2. Devise and implement cleaning plans and schedules for each area; specifying and recording them.
3. In devising these plans consider issues including;
 - a. Floors, stairs, toilets, rest and catering areas, outside paths, roadways and storage areas, etc.
 - b. The contaminant and the most appropriate method for cleaning; vacuum cleaning is better than sweeping
 - c. Dry cleaning or wet cleaning. Wet cleaning may leave slippery floors.
 - d. The source of the contaminant - can it be contained other than by cleaning?
 - e. The frequency of and best time of day for cleaning.
 - f. Waste handling and disposal – offensive, unhygienic, infected, chemical, process etc.
 - g. Warning signs.
 - h. Hazards associated with chemical cleaners.
 - i. Cleaning around potentially hazardous equipment.
 - j. Procedures for cleaning hazardous equipment.
4. Involve the workforce in making these assessments of our needs.
5. Explain these arrangements to the cleaning team, the workforce, their Supervisors and Managers. Ensure they are understood. Provide and record training where necessary.
6. Resource and implement the procedures ensuring that they are followed in practice.
7. Make sure Managers understand the requirements.
8. Monitor the implementation and continuing effectiveness of our procedures to ensure that our workplace is being cleaned properly and adequately.
9. Amend our systems and procedures as necessary in the light of operational experience.

Advice and information on Housekeeping can be found in Guidance Note 3-12.

BUILDING SERVICES

We have a duty to protect our employees and others from the risks of injury if adequate controls are not in place and maintained for basic building services such as gas, electricity, oil, telephones, clean and waste water.

We do this by:

- Nominating senior staff members to reduce the risks posed by the services.
- Making an assessment of the risks from the services to our workforce and others.
- Developing and implementing sufficient control measures to identify all of the major services in the workplace e.g. gas, electricity, water etc
- Ensuring that the management of the control measures relating to services are undertaken by competent, trained personnel.
- Managing our activities to ensure that employees and others use the control measures provided and follow our policies, procedures and Safe Systems of Work.
- Providing and recording relevant training.
- Monitoring and reviewing our systems; using our experience of operating these arrangements we aim to make improvements to the way we manage the risks from building services.

The personnel responsible for above measures are identified within the Responsibility Table of our Health and Safety Policy.

BUILDING SERVICES

Action Check List

To protect workers from risks posed from building services we should have:

1. Identified where and when workers or the public may be exposed to the risks from building services.
2. Identified the control measures already in place and any additional measures that may be required.
3. Considered issues including;
 - a. The identification of all major services.
 - b. A suitable and sufficient safe system of isolation.
 - c. The presentation of this information (a simple plan located alongside any emergency alarm evacuation control zone panel etc.).
 - d. Ensuring the emergency services can be made aware of this information.
 - e. Is all gas work carried out by a competent person, with membership of an approved trade association?
 - i. In the United Kingdom and the Isle of Man this is the Gas Safe™ Register.
 - ii. In the Republic of Ireland this is a member of the Register of Gas Installers of Ireland (RGII).
 - f. Is all electrical work carried out by a competent person, with membership of a recognised electrical trade association?
4. Made sure that Managers and Supervisors understand the procedures and arrangements. Considered whether they need any training.
5. Explained our system and arrangements to the workforce. Ensured they are understood and provide further training where necessary.
6. Implemented the procedure and ensure that it is followed in practice.
7. Monitored and reviewed the operation of this procedure from time to time and made changes to the procedure identified as necessary or beneficial.

Information and advice on the control of building services can be found in our Guidance Note 3-5 - Building Services.

CONTROL OF HAZARDOUS AND NON- HAZARDOUS WASTE

We have a duty to ensure that we effectively and safely dispose of waste materials and products and control the methods of disposal used so that our workforce and any others who might be affected are not at risk to their health, safety or welfare.

We do this by:

- Nominating senior staff members to control the disposal of waste, both hazardous and non-hazardous wastes, from our work premises to minimise the risk posed.
- Assessing the risks to our workers from the handling and disposal of waste.
- Developing and implementing policies, procedures, Safe Systems of Work and control measures relevant to the control of waste including measures necessary to ensure compliance with environmental legislation.
- Ensuring that waste disposal is undertaken by competent, approved personnel, using the correct personal protective equipment.
- Ensuring that the safest means of disposal is used to protect the environment.
- Employees and others adhering to procedures, control measures and Safe Systems of Work.
- Providing and recording relevant training.
- Regular monitoring and review of our arrangements and facilities to ensure that we continue to manage and dispose of waste, hazardous and non-hazardous, without risks to health or safety.

The personnel responsible for the above measures are identified within the Responsibility Table of our Health and Safety Policy.

CONTROL OF HAZARDOUS AND NON- HAZARDOUS WASTE

Action Plan

To ensure our workforce and any others who might be affected are not at risk to their health, safety or welfare from the way we dispose of hazardous and non-hazardous waste materials and products we need to:

1. Identify where we create waste and rubbish during the course of our business.
2. Assess the hazard that the waste materials may present to people at work and others and the risks they face from it.
3. Identify hazardous and controlled wastes.
4. Consider issues relevant to our workplace including;
 - a. Whether the waste is particularly hazardous because it is a classified chemical substance.
 - b. Whether the waste is hazardous because it is or contains biological agents.
 - c. Whether the waste is hazardous because it is sharp, heavy or flammable.
 - d. How is it stored in the workplace?
 - e. How is it moved about the workplace?
 - f. How is it stored outside the premises? Is it secure? Can the public gain access?
 - g. Is the way we store waste an invitation to an arsonist?
 - h. How can we make the process easier and safer for our workers?
5. Consider how environmental legislation and requirements might impact on health and safety procedures and how the waste is disposed of..
6. Involve workers in developing a procedure based on these considerations.
7. Keep a written record of significant risk assessments and the control measures and systems of work adopted.
8. Make sure that Managers and Supervisors understand the procedures and arrangements. Consider whether they need any training.
9. Explain our system and arrangements to the workforce. Ensure they are understood and provide further training where necessary.
10. Implement the procedure and ensure that it is followed in practice.
11. Monitor and review the operation of this procedure from time to time making changes to the procedure identified as necessary or beneficial.

Advice and guidance on the control of hazardous and non-hazardous waste can be found in Guidance Note 3-6.

ACCESS, EGRESS, STAIRS AND FLOORS

We have a duty to protect the health, safety and welfare of our workforce while at work and others who come onto our premises from the risk of injury due to badly maintained access and exit routes, stairs and floors.

We do this by:

- Nominating senior staff members to be responsible for monitoring and reducing incidents occurring as a result of incidents involving access and egress facilities, including stairs and floors etc.
- Making an assessment of the risks from incidents involving access and egress facilities, including stairs and floors etc.
- Developing and implementing control measures, policies and Safe Systems of Work.
- Ensuring that the management of the policy, procedures, Safe Systems of Work and control measures relating to slips, trips and falls are undertaken by competent, trained personnel.
- Managing our activities to ensure that employees and others use the control measures provided and follow our policies, procedures and Safe Systems of Work.
- Providing and recording relevant training.
- Monitoring and reviewing our systems; using our experience of operating these arrangements we aim to make improvements to the way we manage these risks.

The personnel responsible for the above measures are identified within the Responsibility Table of our Health and Safety Policy.

ACCESS, EGRESS, STAIRS AND FLOORS

Action Plan

To protect the health, safety and welfare of our workforce while at work and others who come onto our premises from the risk of injury due to slips, trips and falls we need to;

1. Consider the nature of our premises and the way we work to identify areas where badly designed or maintained access and exit routes, stairs and floors could create access and egress problems or otherwise obstruct movement leading to employees and others slipping, tripping or falling.
2. Identify the control measures already in place and any additional measures that may be required.
3. Consider issues including;
 - a. Steep stairs, handrails.
 - b. Ramps
 - c. Changes in floor levels
 - d. Potholes in floors and yard areas.
 - e. Blind corners
 - f. Wet and slippery floors
 - g. Highly polished floors
 - h. Trailing cables.
 - i. Rubbish.
4. Keep a written record of significant risk assessments and the control measures and systems of work adopted.
5. Make sure that Managers and Supervisors understand the procedures and arrangements. Consider whether they need any training.
6. Explain our system and arrangements to the workforce. Ensure they are understood and provide further training where necessary.
7. Implement the procedure and ensure that it is followed in practice.
8. Monitor and review the operation of this procedure from time to time and after any incident involving access, egress, stairs or floors, making changes to the procedure identified as necessary or beneficial.

Advice and guidance on the control of access, egress, stairs and floors can be found in Guidance Note 3-9.

WORKPLACE SIGNS

Where it is appropriate we have a legal duty to display safety signs to warn our workers and others of hazards that may be present in our workplace.

We do this by:

- Nominating senior staff members to consider and identify where we need to use safety signs.
- Identifying and implementing procedures for the purchase and installation of signs.
- Ensuring that signage is adequate for its purpose and it is maintained and checked.
- Ensuring that assessments of our requirements are made by competent, trained personnel.
- Ensuring that workplace signs are adhered to.
- Providing and recording relevant training.
- Monitoring and reviewing our systems; using our experience of operating these arrangements we aim to make improvements to the way we manage the use of safety signs.

The personnel responsible for the above measures are identified within the Responsibility Table of our Health and Safety Policy.

WORKPLACE SIGNS

Action Plan

To protect the health, safety and welfare of our employees and others from the hazards and risks present in our workplace we need to use safety signs as a way of warning personnel that those hazards exist. We need to;

1. Identify where on our worksite hazards exist that need to be marked with warning signs.
2. Identify signs already in place and any additional signs that may be required.
3. Consider, as part of our assessment, issues such as;
 - a. Where prohibition signs should be used.
 - b. Where signs should be used as a caution.
 - c. Where signs should be used to require positive action.
 - d. Where signs are required to indicate a mandatory action.
 - e. Whether signs are made, coloured and displayed according to legal requirements.
 - f. Replacement of damaged signs – now and in the future.
4. Involve our workforce in developing these arrangements and systems.
5. Keep a written record of assessments and decisions made.
6. Make sure that Managers and Supervisors understand the procedures and arrangements. Consider whether they need any training.
7. Explain decisions to the workforce. Ensure they are understood and provide further training where necessary.
8. Implement the procedure and ensure that it is followed in practice.
9. Monitor and review the operation of this procedure and the provision of signs from time to time.

Advice on safety signs can be found in Guidance Note 3-11.

WORKING IN THE OPEN AIR

We have a duty to protect our employees from the risks posed from working in the open air.

We do this by:

- Nominating senior staff members to reduce the risks arising from working in the open air.
- Making an assessment of the risks to our workforce from working in the open air.
- Developing and implementing control measures, policies and Safe Systems of Work.
- Ensuring that the management of the policy, procedures, Safe Systems of Work and control measures relating to open air working are undertaken by competent, trained personnel.
- Providing and using personal protective equipment.
- Managing our activities to ensure that employees and others use the control measures provided and follow our policies, procedures and Safe Systems of Work.
- Providing and recording relevant training.
- Monitoring and reviewing our systems; using our experience of operating these arrangements we aim to make improvements to the way we manage the risks from working in the open air.

The personnel responsible for the above measures are identified within the Responsibility Table of our Health and Safety Policy.

WORKING IN THE OPEN AIR

Action Plan

To protect workers from the risks posed from working in the open air we need to:

1. Assess our work activity to identify where and when workers may be exposed to harm from working in the open air.
2. Identify any workers with health issues that make them particularly susceptible to injury from external working.
3. Identify the control measures already in place and any additional measures that may be required.
4. Consider;
 - a. Excessive exposure to sunlight – provide sunscreen/sun block, water supply, regular breaks, covering exposed parts of the body.
 - b. Watercourse hazards – fall arrest equipment, inflatable life jackets, two-man working.
 - c. Lack of available light to work safely (e.g. during the winter months or at night) – provide appropriate artificial lighting and spare bulbs.
 - d. Exposure to dust and micro-organisms (resulting in sensitization or asthma) – is health surveillance or respiratory protective equipment required?
 - e. Life-threatening reactions from bites and stings - availability of antidotes, first aid provision, medical assistance, individual specific risk assessments.
 - f. Adverse weather conditions (hypothermia, heat exhaustion) - length of time of exposure, appropriate clothing, periodic rest breaks.
5. Keep a written record of significant risk assessments and the control measures and systems of work adopted.
6. Make sure that Managers and Supervisors understand the procedures and arrangements. Consider whether they need any training.
7. Explain our system and arrangements to the workforce. Ensure they are understood and provide further training where necessary.
8. Implement the procedure and ensure that it is followed in practice.
9. Report any incidence of a reportable injury or disease to the Enforcing Authorities.
10. Monitor and review the operation of this procedure from time to time and whenever an employee is harmed as a result of working in the open air, making changes to the procedure identified as necessary or beneficial.

Information and advice on the control of external working can be found in our Guidance Note 3-13.

PREMISES

We have a duty to protect our employees and others from the hazards and risks posed by entering our premises and to ensure that our facilities are provided and maintained to an acceptable standard.

We do this by:

- Nominating senior staff members to reduce the risks posed by work in or by use of our facilities.
- Making an assessment of the risks arising from working on our premises to our workforce and others.
- Developing and implementing control measures, policies and Safe Systems of Work.
- Ensuring that the management of the policy, procedures, Safe Systems of Work and control measures relating to our premises are undertaken by competent, trained personnel.
- Managing our activities to ensure that employees and others use the control measures provided and follow our policies, procedures and Safe Systems of Work.
- Providing and recording relevant training.
- Monitoring and reviewing our systems; using our experience of operating these arrangements we aim to make improvements to the way we manage the risks posed.

The personnel responsible for the above measures are identified within the Responsibility Table of our Health and Safety Policy.

PREMISES

Action Check List

To protect workers and others from the risks associated with our premises we should have;

1. Completed out a general risk assessment of the facility identifying any hazards that the premises may pose to our employees.
2. Considered;
 - a. Work space – ensuring employees can carry out their tasks without obstruction.
 - b. Sanitary conveniences and washing facilities – must be available within close proximity to the workforce and determined by the number of employees.
 - c. Windows and doors – ensuring these do not pose an obstruction or vision problem.
 - d. Rest areas - provision for employees to be able to eat and drink away from working areas.
3. Provided clean sanitary facilities, a supply of drinking water and rest areas for staff appropriate to the numbers of employees in our workplaces.
4. Ensured that a fire risk assessment has been made and recorded,
5. Arranged for routine testing of the fire alarm system and emergency lighting; ensuring that this is documented.
6. Identified any asbestos present in the premises and maintain an asbestos register; seeking remediation treatment where necessary.
7. Ensured all our insurance liability policies are current and suitable for the premises.
8. Ensured glazing in high risk areas is of a safety material or protected against breakage.
9. Considered pedestrian segregation from vehicles, with clearly identified walkways as a means of ensuring pedestrian safety.
10. Implemented a suitable housekeeping regime that reduces the likelihood of slip, trip and fall hazards occurring on our premises.

Advice and guidance on the control of hazards in our premises can be found in Guidance Note 3-15.

ELECTRICAL SAFETY

We have a duty to protect our employees and other people who use our premises from the risk of electrical injury caused by our electrical installations, our use of fixed equipment and our use of portable electrical appliances.

We do this by:

- Nominating senior staff members to ensure the safety of our electrical installation equipment and portable appliances.
- Making an assessment of the risks from electrical installations, fixed equipment and portable appliances.
- Developing and implementing procedures, control measures, policies and Safe Systems of Work.
- Ensuring that any work carried out on our electrical installation, equipment and appliances is carried out by competent, accredited electrical engineers.
- Providing and using personal protective equipment where appropriate.
- Regular inspection by competent accredited electrical engineers.
- Managing our activities to ensure that employees and others use the control measures provided and follow our policies, procedures and Safe Systems of Work.
- Providing relevant training and keeping training records.
- Monitoring and reviewing our systems; using our experience of operating these arrangements we aim to make improvements to the way we manage electrical safety.

The personnel responsible for the above measures are identified within the Responsibility Table of our Health and Safety Policy.

ELECTRICAL SAFETY

Action Plan

To protect workers and others from the risks from using fixed and portable electrical equipment we need to:

1. Consider our activities and identify where and when workers may be exposed to risks to their health and safety from fixed or portable electrical equipment.
2. Assess the risks from that exposure to fixed and portable electrical equipment, identifying control measures in place and any additional measure that may be required to avoid risk.
3. Consider relevant issues including:
 - a. The competence of employees or contractors who install or maintain electrical equipment.
 - b. Inspection of fixed electrical installations as prescribed by the IEE Wiring Regulations (17th edition) BS 7671.
 - c. The maintenance of electrical installations between inspections.
 - d. The maintenance and inspection of portable electrical equipment.
 - e. Using battery powered hand tools.
 - f. Whether hydraulic or pneumatic tools might be safer.
 - g. Reducing the operating voltage.
 - h. Residual current devices.
 - i. Use in flammable or explosive areas; use in wet and adverse conditions.
 - j. Equipment used by mobile workers.
 - k. Use of trailing cables.
4. Purchase robust equipment suitable for the environment in which it is to be used.
5. Arrange for the routine testing and inspection of portable electrical equipment.
6. Develop a procedure based on these considerations.
7. Keep a written record of significant risk assessments and the control measures and systems of work adopted.
8. Make sure that Managers and Supervisors understand the procedures and arrangements. Consider whether they need any training.
9. Explain our procedures and arrangements to our workforce. Ensure they are understood and provide training where necessary.
10. Implement the procedure and ensure that it is followed in practice.
11. Monitor and review the operation of this procedure from time to time and after any electrical incident, making changes identified as beneficial or necessary.

Information and advice on the use of fixed and portable electrical equipment can be found in our Guidance Note 4-1 – Electrical Safety.

OFFICE EQUIPMENT

We have a duty to protect our employees and other people who use our premises from the risks associated with the use of office equipment.

We do this by:

- Nominating senior staff members to consider the safety implications of our use of office equipment.
- Making an assessment of the risks from our use of office equipment.
- Developing and implementing procedures, control measures, policies and Safe Systems of Work.
- Ensuring that office equipment is properly maintained.
- Managing our activities to ensure that employees and others use the control measures provided and follow our policies, procedures and Safe Systems of Work.
- Providing relevant training and keeping training records.
- Monitoring and reviewing our systems; using our experience of operating these arrangements we aim to make improvements to the way we manage the safety of office equipment.

The personnel responsible for the above measures are identified within the Responsibility Table of our Health and Safety Policy.

OFFICE EQUIPMENT

Action Plan

To protect workers and others from the risks of using office equipment we need to:

1. Consider our activities and identify where and when workers may be exposed to risks to their health and safety from the use of office equipment.
2. Assess the risks from that use of office equipment, identifying control measures already in place and any additional measure that may be required to avoid risk.
3. Consider relevant issues including:
 - a. The competence and training of workers who use office equipment.
 - b. Who does what when the equipment goes wrong?
 - c. Are any young workers likely to use office equipment? Are any special precautions needed?
 - d. Are manufacturers' instructions followed?
 - e. The maintenance of office equipment.
 - f. The location of office equipment.
4. Purchase robust equipment suitable for the work and environment in which we require it to be used.
5. Develop a procedure based on these considerations.
6. Keep a written record of any significant risk assessments and the control measures and systems of work adopted.
7. Make sure that Managers and Supervisors understand the procedures and arrangements. Consider whether they need any training.
8. Explain our procedures and arrangements to our workforce. Ensure they are understood and provide training where necessary.
9. Implement the procedure and ensure that it is followed in practice.
10. Monitor and review the operation of this procedure from time to time and after any accident or incident, making changes identified as beneficial or necessary.

Information and advice on the use of fixed and portable office equipment can be found in our Guidance Note 4-4 – Office Equipment.

STORAGE OF CHEMICAL SUBSTANCES and AGENTS

We have a duty to protect our workers and others from the potential hazards and risks present as a result of the storage of chemical substances at our workplace.

We do this by:

- Nominating senior staff members to identify the chemical substances used and their storage requirements.
- Developing and implementing risk assessments, procedures, Safe Systems of Work and control measures to minimise risk within our work premises.
- Implementing the procedures, Safe Systems of Work and control measures.
- Ensuring that the storage, containment and exhaust ventilation arrangements are adequate for their purpose, as defined in prescribed legislation.
- Ensuring that the management of the policy, procedures, Safe Systems of Work and control measures relating to chemical substances are undertaken by competent, trained personnel.
- Providing and using personal protective equipment.
- Managing our activities to ensure that employees and others use the control measures provided and follow our policies, procedures and Safe Systems of Work.
- Providing and recording relevant training.
- Monitoring and reviewing our systems; using our experience of operating these arrangements we aim to make improvements to the way we manage the risks from stored chemical substances.

The personnel responsible for the above measures are identified within the Responsibility Table of our Health and Safety Policy.

STORAGE OF CHEMICAL SUBSTANCES and AGENTS

Action Plan

To protect our workforce and others from the potential hazards and risks present as a result of the storage of chemical agents at our workplace we need to;

1. Make an inventory of every chemical substance, including its location and the maximum quantities expected, stored on our premises.
2. Assess the potential risks from the storage of each of those substances and identify those which are hazardous and those which are not.
3. Assess the hazardous chemical substances for the risks that they pose to health and safety because of the quantities that we store and / or the way that they are stored.
4. Identify the control measures that we should adopt.
5. Consider matters including;
 - a. What hazardous chemical substances do we store?
 - b. In what quantity?
 - c. Where?
 - d. Are they stored in accordance with SDS recommendations and published guidance?
 - e. Are the storage arrangements suitable?
 - f. Have we identified and separated incompatible chemical agents? How can we improve our storage arrangements?
 - g. Is our workforce aware of hazards and risks?
6. Record details of our assessments, the results and any controls subsequently introduced.
7. Prepare a detailed statement of how we control the risks.
8. Make sure that Managers and Supervisors understand the procedures and arrangements. Consider whether they need any training.
9. Explain our system and arrangements to the workforce. Ensure they are understood and provide further training where necessary.
10. Implement the procedure and ensure that it is followed in practice.
11. Monitor and review the operation of this procedure from time to time and whenever hazardous substances give rise to incident, injury or ill health, making changes to the procedure identified as necessary or beneficial.

Advice on the storage of chemical substances can be found in Guidance Note 4-5.

SLIPS, TRIPS AND FALLS

We have a duty to protect our workers and others visiting our premises from the risks of slipping, tripping and falling.

We meet this duty by:

- Nominating senior staff members to be responsible for monitoring and improving workplace pedestrian safety.
- Identifying all the potential causes of slips, trips and falls and assessing the risk.
- Developing and implementing procedures and control measures.
- Ensuring that pedestrian routes are fit for the purpose, that they are routinely maintained and checked.
- Ensuring that any risk assessments or safety inspections are carried out by competent and trained personnel.
- Adhering to our risk assessments, procedures and control measures.
- Providing wherever possible segregated traffic routes and adequate signage.
- Providing and recording relevant training.
- Regular monitoring and review of our arrangements to ensure that arrangements we have made remain sufficient to control the potential risk.

The personnel responsible for the above measures are identified within the Responsibility Table of our Health and Safety Policy.

SLIPS, TRIPS AND FALLS

Action Plan

To protect our workforce and others who visit our premises from the risk of accidents caused by slips, trips and falls we need to;

1. Identify where on our worksite there are potential areas for slips, trips or falls accidents.
2. Assess the hazards in each of those areas and the risks that people at work and others may face.
3. Identify existing controls and any additional measures that we should be taking.
4. Consider issues including;
 - a. Floor surfaces.
 - b. The environment.
 - c. Footwear.
 - d. Contamination.
 - e. Obstacles and obstructions.
 - f. Cleaning regimes.
 - g. People – human factors.
5. Involve workers in developing a procedure or arrangements based on these considerations.
6. Keep a written record of significant risk assessments and the control measures and systems of work adopted.
7. Make sure that Managers and Supervisors understand the procedures and arrangements. Consider whether they need any training.
8. Explain our system and arrangements to the workforce. Ensure they are understood and provide further training where necessary.
9. Implement the procedure and ensure that it is followed in practice.
10. Monitor and review the operation of this procedure from time to time and after any report of a dangerous incident or of a person suffering injury or due to slipping or tripping and falling on our premises or while at work making changes identified as necessary or beneficial.

Advice and guidance on slips, trips and falls can be found in Guidance Note 4-8.

SPECIAL EVENTS

When we organise functions we have a duty to protect our own workforce and others from the hazards and risks that are present; these will vary according to the type of function and its location.

We do this by:

- Nominating senior staff members to coordinate and be in overall control of health, safety and welfare at each function that we organise.
- Making an assessment of the risks at and from each function that we organise.
- Developing and implementing control measures, policies and Safe Systems of Work.
- Ensuring that the development and management of the policy, procedures, Safe Systems of Work and control measures are undertaken by competent, trained personnel.
- Providing and using personal protective equipment.
- Managing our activities to ensure that employees and others use the control measures provided and follow our policies, procedures and Safe Systems of Work.
- Providing and recording relevant training.
- Monitoring and reviewing our systems; using our experience of operating these arrangements we aim to make improvements to the way we manage the risks at functions.

The personnel responsible for the above measures are identified within the Responsibility Table of our Health and Safety Policy.

SPECIAL EVENTS

Action Plan

To protect the health, safety and welfare of both our own workforce and others from the hazards and risks that are present when a function is organised we need to;

1. Assess our work activity to identify where and when workers or the public may be exposed to risk at each function we organise.
2. Consider the arrangements we have in place to protect the health, safety and welfare of our workforce and others from the risks involved in organizing functions.
3. Identify the control measures already in place and any additional measures that may be required.
4. Consider;
 - a. risks due to the location. Steep slopes, steps, water hazards etc.
 - b. electrical safety especially where temporary arrangements are made.
 - c. cleanliness procedures for both permanent and temporary workers.
 - d. equipment hazards to staff (cuts, electric shock etc.).
 - e. manual handling capabilities.
 - f. slips, trips and falls.
 - g. training of staff, permanent and temporary (use of machinery, first aid and fire procedures).
 - h. young and temporary workers
 - i. establishing a Safe System of Work for activities at each function.
5. Keep a written record of significant risk assessments and the control measures and systems of work adopted.
6. Make sure that Managers and Supervisors understand the procedures and arrangements. Consider whether they need any training.
7. Explain our system and arrangements to the workforce. Ensure they are understood and provide further training where necessary.
8. Implement the procedure and ensure that it is followed in practice.
9. Monitor and review the operation of this procedure from time to time and after any injury or incident, making changes to the procedure identified as necessary or beneficial.

Advice and guidance on Special Events can be found in Guidance Note 4-9.

SAFETY IN FOOD PREPARATION ENVIRONMENTS

We have a duty to protect our employees and others from the hazards associated with the preparation of food.

We do this by:

- Nominating senior staff members to manage and reduce the risks created by work in food environments.
- Making an assessment of the risks from working in food environments to our workforce and others.
- Developing and implementing control measures, policies and Safe Systems of Work.
- Ensuring that the policies, procedures, Safe Systems of Work and control measures relating to safety in food premises are managed by competent, trained personnel.
- Implementing housekeeping, cleaning and maintenance regimes.
- Managing our activities to ensure that employees and others use the control measures provided and follow our policies, procedures and Safe Systems of Work.
- Providing and recording relevant training.
- Monitoring and reviewing our systems; using our experience of operating these arrangements we aim to make improvements to the way we manage the risks from working in food environments.

The personnel responsible for safety in food environments are identified within the Responsibility Table of our Health and Safety Policy.

SAFETY IN FOOD PREPARATION ENVIRONMENTS

Action Plan

To protect workers and others from the risks of working in a food environment we need to;

1. Make an assessment of the risks from all activities associated with the preparation of food and ensure that adequate control measures are put in place and communicated to our workforce.
2. Involve our workforce in making these assessments.
3. Identify the control measures already in place and any additional measures that may be required. Refer to guidance published by trade bodies, manufacturers' information, BS, IS and CEN Standards.
4. Consider among other issues;
 - a. Slips, trips and falls.
 - b. Manual handling - avoid workers carrying heavy materials.
 - c. Lighting - provide adequate lighting.
 - d. Ventilation - provide mechanical ventilation for ovens, grills and fryers.
 - e. COSHH assessments for all hazardous substances used - ensure they have been approved for use in food premises.
 - f. Machinery guarding.
 - g. Maintenance of gas and electrical equipment.
 - h. Inspect and maintain knives, machinery, electrical equipment, and storage containers in good condition.
 - i. Personal protective equipment.
5. Keep a written record of significant risk assessments and the control measures and systems of work adopted.
6. Make sure that Managers and Supervisors understand the procedures and arrangements. Consider whether they need any training.
7. Explain our system and arrangements to our workforce. Ensure they are understood and provide further training where necessary.
8. Implement the procedure and ensure that it is followed in practice.
9. Monitor and review the operation of this procedure periodically and after any incidents, making changes identified as necessary.

Advice and guidance on the development of food environment safety programmes can be found in Guidance Note 4-35.

MANUAL HANDLING

We have a duty to ensure the safety, health and welfare of our employees and others who enter our premises from the risks present in manual handling activities.

We do this by:

- Nominating senior staff members to manage and identify load or lifting hazards.
- Making an assessment of the risks from manual handling to our workforce.
- Developing and implementing procedures and systems of work to reduce the risks from manual handling operations in the course of our business.
- Ensuring that any Manual Handling Risk Assessments are undertaken by competent, trained personnel.
- Eliminating the need for manual handling through the introduction of mechanical handling equipment or other alternatives where this is reasonably practicable.
- Regularly inspecting the premises to identify any new processes, personnel or changes to the building's structure which would trigger the need for re-assessment.
- Employees and others adhering to the contents of procedures, control measures and Safe Systems of Work.
- Providing and recording job-based training for employees with manual handling tasks.
- Monitoring and reviewing our systems; using our experience of operating these arrangements we aim to make improvements to the way we manage the risks from manual handling.

The personnel responsible for the above measures are identified within the Responsibility Table of our Health and Safety Policy.

MANUAL HANDLING

Action Plan

To protect our workforce and others from the risk of injury while manual handling loads we need to;

1. Assess the risks to our workforce from handling loads. This includes lifting and carrying as well as pushing and pulling loaded containers.
2. Have a nominated Manager to lead the process.
3. Consider;
 - a. What we have to move - its size and shape.
 - b. The weight.
 - c. The frequency.
 - d. Which of our workforce is involved? Do some handle loads more frequently than others?
 - e. Can we reduce the need for movement? Are there mechanical aids we could use? Can we use them?
 - f. Can we adapt our processes to reduce the risk?
 - g. Have our workforce been trained in manual handling techniques for the products and goods that they handle in the course of their work?
 - h. Where team lifting is employed have the workers been trained in the same system?
 - i. Are the floors suitable and maintained for the work that goes on?
 - j. Are there extremes of temperature?
 - k. Are any groups or individual workers at particular risk?
 - l. Is health surveillance required? If yes at what level?
4. Keep a written record of significant risk assessments and the control measures and systems of work adopted.
5. Involve workers in developing a procedure based on these considerations.
6. Make sure that Managers and Supervisors understand the procedures and arrangements. Consider whether they need any training.
7. Explain these arrangements to our workforce. Ensure they are understood and provide further training where necessary.
8. Implement the procedure and ensure that it is followed in practice.
9. Monitor and review the operation of this procedure from time to time and after any ill health or back injury, making changes identified as necessary
10. Where employees are injured in an accident involving manual handling or are diagnosed with ill-health on account of manual handling at work report, to the enforcing authorities, those cases that fall into a reportable category. (Guidance Note 1-3 explains what is reportable).

Information and advice, including a template for Manual Handling Risk Assessments, can be found in our Guidance Note 5-9 – Manual Handling.

DISPLAY SCREEN EQUIPMENT

We have a duty to protect the safety, health and welfare of our workforce from the risk involved in the use of display screen equipment (DSE).

We do this by:

- Nominating senior staff members to identify and reduce risks from the use of display screen equipment.
- Assessing the risks from display screen equipment to each member of our workforce who uses them.
- Developing and implementing control measures, policies and Safe Systems of Work.
- Ensuring that the management of the policy, procedures, Safe Systems of Work and control measures relating to the use of display screen equipment are undertaken by competent, trained personnel.
- Providing and using personal protective equipment where appropriate.
- Managing our activities to ensure that employees and others use the control measures provided and follow our policies, procedures and Safe Systems of Work.
- Providing and recording relevant training.
- Monitoring and reviewing our systems; using our experience of operating these arrangements we aim to make improvements to the way we manage the risks from display screen equipment.

The personnel responsible for the DSE assessment process and these measures are identified in the Responsibility Table of our Health and Safety Policy.

DISPLAY SCREEN EQUIPMENT

Action Plan

To protect workers from the risks from display screen equipment we need to:

1. Appoint a member or members of staff to receive training to become a competent and qualified assessor for display screen equipment.
2. Assess our work activity to identify where and when workers use display screen equipment.
3. Ensure all display screen users complete a Self-Assessment Questionnaire which can be found in Guidance Note 5-11.
4. Identify any workers with health issues that make them particularly susceptible to problems in using display screen equipment.
5. Identify the control measures already in place and any additional measures that may be required.
6. Consider the issues, including;
 - a. Furniture
 - b. Screen size
 - c. Lighting; reflections and glare
 - d. Rest breaks; rotating work activity
 - e. Eye sight tests
 - f. Home and off-site users of display screen equipment
 - g. Self-assessments and follow-up.
7. Keep a written record of all risk assessments, whether self-assessments or assessments by trained assessors and the control measures and systems of work adopted.
8. Make sure that Managers and Supervisors understand the procedures and arrangements. Consider whether they need any training.
9. Explain our system and arrangements to the workforce. Ensure they are understood and provide further training where necessary.
10. Implement the procedure and ensure that it is followed in practice.
11. Report any incidence of reportable ill health caused by the use of display screen equipment to the Enforcing Authorities.
12. Monitor and review the operation of this procedure from time to time and whenever an employee develops a display screen equipment related illness, make changes to the procedure identified as necessary or beneficial.

Advice and guidance on health, safety and welfare in the use of display screen equipment can be found in Guidance Note 5-11.

USE OF CHEMICAL AGENTS AND SUBSTANCES

We have a duty to ensure the safety, health and welfare of our employees and others who may be affected by our work activities from the harmful effects of exposure to hazardous substances in the course of our business.

We do this by:

- Nominating senior staff members to identify chemical agents or hazardous substances encountered in the course of our business and the hazards posed by them.
- Developing and implementing risk assessments, procedures or Safe Systems of Work and control measures.
- Ensuring that any risk assessments are undertaken by competent, trained personnel.
- Employees and others adhering to the contents of the developed procedures, control measures and Safe Systems of Work.
- Providing safe equipment for use with hazardous substances.
- Providing sufficient personal protective equipment.
- Providing and recording relevant training.
- Monitoring and reviewing our systems; using our experience of operating these arrangements we aim to make improvements to the way we manage the risks from chemical substances.

The personnel responsible for the above measures are identified within the Responsibility Table of our Health and Safety Policy.

USE OF CHEMICAL AGENTS AND SUBSTANCES

Action Plan

To protect our employees and others who may be affected by our work activities from the harmful effects of exposure to chemical and hazardous substances in the course of our business we need to;

1. Make an inventory of every hazardous substance used in the course of our business and those that could be generated as a by-product of our business processes.
2. Assess the hazardous substances we use and encounter and the risks that they pose to health and safety because of the quantities to which people are exposed or the way that we use them.
3. Assess or measure the levels of hazardous substances to which our workforce is exposed.
4. Identify the control measures that we should adopt.
5. Consider relevant matters including;
 - a. What hazardous substances do we use?
 - b. Are any hazardous substances created by the work we do?
 - c. Who might be exposed?
 - d. Where and when?
 - e. What are the levels they are exposed to?
 - f. How does this compare with the Workplace Exposure Limits?
 - g. Can we eliminate the risk entirely?
 - h. How do we reduce exposure?
 - i. What control measures are appropriate?
6. Record details of our assessments, measurements, results and any controls subsequently introduced.
7. Make sure that Managers and Supervisors understand the procedures and arrangements. Consider whether they need any training.
8. Inform, instruct and train workers about the hazardous substances we use, the risks, exposure levels in the workplace and any control measures introduced.
9. Implement the procedure and ensure that it is followed in practice.
10. Report any incidence of a reportable disease to the Enforcing Authorities.
11. From time to time check that the control measures are still working and that exposure levels are being controlled below the Workplace Exposure Limit.
12. Monitor and review the operation of this procedure from time to time and whenever hazardous substances give rise to incident, injury or ill-health, making changes to the procedure identified as necessary or beneficial.

Advice on controlling exposure to chemical substances can be found in Guidance Note 5-14.

ASBESTOS AT WORK

Duty to Identify, Control and Manage

Although our premises were built before 2000 we have not had an Asbestos Survey carried out to confirm the absence or identify the presence of asbestos containing materials (ACMs) in the building structure. We operate on the basis that whenever building and maintenance work that involves the building structure is carried out the work area is specifically and formally assessed for the presence of ACMs.

In the course of our business our workforce is unlikely to come into contact with any asbestos or asbestos containing materials at our customers' premises. We have therefore made no specific arrangements to manage exposure to asbestos and ACMs at other worksites.

We need to control this potential hazard and we do this by;

- Developing an Asbestos Management Plan which sets out our assessment procedure when ever building or maintenance work is planned.
- Making sure that our workers are trained and informed about the potential hazard and risks and know how to respond if they discover suspect ACMs.
- Nominating senior staff members to manage this process and to develop and implement procedures, Safe Systems of Work and control measures.
- Employees and others adhering to the contents of procedures, control measures and Safe Systems of Work.
- Employing competent trained contractors to aid in the assessments and subsequent activities where the presence of asbestos is identified.. Monitoring and reviewing our systems; using our experience of operating these arrangements we aim to make improvements to the way we manage the risks from asbestos.

The personnel responsible for the asbestos register and all of the above measures are identified within the Responsibility Table of our Health and Safety Policy.

ASBESTOS AT WORK

Duty to Identify, Control and Manage

Action Plan

To protect our workforce from the risk of exposure to asbestos from asbestos containing materials whilst at work we need to;

1. Make sure that all of our workforce is trained in asbestos awareness and the hazards and risks associated with exposure to ACMs.
2. Develop an Asbestos Management Plan which sets out the procedures for assessing the presence of ACMs whenever work that will disturb the building fabric is planned. We need to be able to take the advice of someone who is competent – able to advise on or analyse for the presence of asbestos and advise on how to deal with it.
3. The Plan needs to consider how to quickly deal with the material in accordance with the legal requirements where the work needs to be done in a short timescale.
4. Explain these arrangements to our workforce.
5. Make any contractors coming onto our premises aware of our policy and that there has not be an asbestos survey. They must treat all suspect material as containing asbestos until it is proved otherwise.
6. Explain our arrangements to supervisors and workers. Ensure they are understood.
7. Provide training where required and information for staff nominated with responsibility.
8. Implement the procedure and ensure that it is followed in practice.
9. Review the operation of this procedure at least annually.

Information and advice on the control and management of asbestos in buildings can be found in Guidance Note - 5-16.

STRESS IN THE WORKPLACE

We recognise that we have a duty to take action to reduce and where reasonably practicable to eliminate ill health which is caused by work related stress.

We do this by;

- Nominating senior staff members to consider and manage the issue of work related stress.
- Developing and implementing a policy for identifying and managing work related stress.
- Involving our workforce in the development of this policy and our procedures.
- Providing information about the policy to all workers.
- Training Managers and Supervisors to recognise symptoms of work related stress.
- Ensuring that the policy is adopted and followed.
- Ensuring employees know what to do if they suspect they, or a colleague, are suffering from stress.
- Providing counselling or occupational health services and support.
- Monitoring and reviewing the policy and procedures; using our experience of operating these arrangements we aim to make improvements to the way we manage ill health caused by work related stress.

The personnel responsible for monitoring and implementing the above policy are identified in the Responsibility Table of our Health and Safety Policy.

STRESS IN THE WORKPLACE

Action Plan

To protect our workforce from ill health caused by work related stress we need to;

1. Assess our work activities to identify where and when workers or others may experience unacceptable levels of work related stress.
2. Prepare a stress policy and plan of action when a worker is identified as suffering ill health on account of work related stress.
3. Involve the workforce in developing the policy and plan of action.
4. Identify any control measures already in place and the additional measures or actions that may be required. Refer to published trade guidance and advice.
5. Consider among other issues;
 - a. The outward signs of stress;
 - i. emotional. Fatigue, anxiety, poor motivation in general.
 - ii. cognitive. Making mistakes, having accidents.
 - iii. behavioural. Deteriorating relationships with colleagues, irritability, indecisiveness, absenteeism, excessive smoking, excessive drinking, overeating etc.
 - iv. physiological, Increased complaints about health - headaches, dizziness etc.
 - b. Stress risks assessments.
 - c. Support to an employee who is experiencing stress whether work related or not e.g. following a bereavement or separation.
 - d. The effect of new or changed roles without adequate training.
 - e. The effect of poor communication during times of change
 - f. Excessive workloads, long working hours, unsocial hours.
 - g. Working alone
 - h. Employees having to cover for the poor performance or attendance of colleagues.
 - i. Do employees have developmental opportunities.
 - j. Bullying and harassment by Managers, Supervisors and colleagues.
6. Develop procedures, programmes and practices tailored to our workplace.
7. Make sure that Managers and Supervisors understand the policy and procedure. Consider whether they need any training.
8. Explain these arrangements to the workforce. Ensure they are understood and provide further training where necessary.
9. Implement the policy and procedure and ensure that it is followed in practice.
10. Monitor and review the operation of the policy and procedure from time to time and following any case of ill health caused by work related stress, making changes to the procedure identified as necessary or beneficial.

Safety Arrangement 5-18

Further advice and information on work related stress can be found in Guidance Note 5-18.

AGGRESSION AND VIOLENCE

We recognise that we have a duty to take action to reduce so far as is reasonably practicable the risk of aggression and violence to our workforce whilst at work which arise from clients and/or the nature of our work.

We do this by:

- Nominating senior staff members to consider and manage the issue of aggression and violence at work.
- Developing and implementing a policy for identifying and managing work where there are risks of aggression and violence.
- Involving our workforce in the development of this policy and our procedures.
- Providing information about the policy to all workers.
- Training Managers and Supervisors to recognise work activities and locations where there are higher than normal risks of work related violence and aggression.
- Ensuring that the policy is adopted and followed.
- Ensuring employees know what to do if they suspect they, or a colleague, are under threat of violence or aggression at work.
- Providing counselling or occupational health services and support.
- Monitoring and reviewing the policy and procedures; using our experience of operating these arrangements we aim to make improvements to the way we manage the risk of injury or ill health caused by work violence and aggression.

The personnel responsible for monitoring and implementing the above policy are identified within the Responsibility Table of our Health and Safety Policy.

AGGRESSION AND VIOLENCE

Action Plan

To protect our workforce from injury or ill health caused by violence and aggression at work we need to;

1. Assess our work activities to identify where workers may be subjected to violence or aggression from clients or other people as a result of their work activities.
2. Prepare a policy and plan of action to deal with aggression and violence at work.
3. Involve the workforce in developing the policy and plan of action.
4. Identify any control measures already in place and the additional measures or actions that may be required. Refer to published trade guidance and advice. Take advice from the Police.
5. Consider among other issues;
 - a. Recognising where and why workers may be at risk.
 - b. Systems to allow the reporting of aggression and threats of violence at work.
 - c. Handling incidents – calling the police.
 - d. Security screens and alarms.
 - e. Workplace layout – make it difficult for aggressors to reach workers.
 - f. Lone working and security for workers off site.
 - g. Training workers to identify the early signs of aggressive behaviours and conflict management techniques.
 - h. Counselling.
 - i. Special arrangements for dealing with clients and people known to be aggressive or a risk to staff.
6. Develop procedures, programmes and practices tailored to our workplace.
7. Record details of our assessment, the controls in force and additional measures planned.
8. Make sure that Managers and Supervisors understand the policy and procedure. Consider whether they need any training.
9. Explain these arrangements to the workforce. Ensure they are understood and provide further training where necessary.
10. Implement the policy and procedures and ensure that it is followed in practice.
11. Monitor and review the operation of the policy and procedure from time to time and following any case of injury or ill health caused by aggression or violence at work, making changes to the procedure identified as necessary or beneficial.

Further advice and information on work related aggression and violence can be found in Guidance Note 5-19.

Safety Arrangement 6-15

EDUCATIONAL VISITS

We have a duty to protect our workforce and others from the risks created on educational visits.

We do this by;

- Nominating senior staff members to identify hazards and risks and manage the safety of educational visits.
- Assessing the risks created by educational visits.
- Developing and implementing control measures, procedures and Safe Systems of Work.
- Ensuring that the management of the policy, procedures, Safe Systems of Work and control measures relating to educational visits is undertaken by competent, trained personnel.
- Ensuring any educational / play equipment on sites visited is safe to use.
- Ensuring that risk assessments are completed by competent, trained personnel.
- Providing and recording relevant training.
- Monitoring and reviewing our systems; using our experience of operating these arrangements we aim to make improvements to the way we manage the risks associated with educational visits.

The personnel responsible for the above measures are identified within the Responsibility Table of our Health and Safety Policy.

Safety Arrangement 6-15

EDUCATIONAL VISITS

Action Plan

To protect children and our workers from the hazards of educational visits we need to:

1. Assess the proposed visit and identify areas where children and others could be harmed.
2. Identify the control measures already in place and any additional measures that may be required.
3. Consider;
 - a. Issues regarding parental permission and approval of the visit from the Local Education Authority (where applicable).
 - b. Safety rules for children to adhere to on visit site (agreed in liaison with site staff).
 - c. Safety of travel arrangements to and from the proposed site.
 - d. Number of accompanying staff in ratio to number of children attending – are staff numbers sufficient?
 - e. Possibility of contracting infectious diseases on proposed site.
 - f. Ground / weather conditions which may possibly be encountered.
 - g. Risks of water-based activities.
 - h. Possibility of contact with electrical equipment / different forms of machinery.
 - i. Possibility of contact with hazardous substances, e.g. pesticides and animals.
 - j. Overseas visits will require more in-depth consideration.
4. Keep a written record of significant risk assessments and the control measures and systems of work adopted.
5. Make sure that relevant senior members of staff understand the procedures and arrangements. Consider whether they need any training.
6. Implement the procedure and ensure it is followed in practice.
7. Monitor and review the operation of this procedure from time to time and whenever an incident occurs, make changes to the procedure identified as necessary or beneficial.

Information and advice on the control of risks from educational visits can be found in Guidance Note 6-15.

Safety Arrangement 6-16

SCHOOLS AND NURSERIES

We have a duty to protect our workforce and others from the risks encountered in working in schools and nurseries.

We do this by;

- Nominating senior staff members to identify hazards and risks and manage school and nursery safety.
- Assessing the risks created by work in schools and nurseries.
- Developing and implementing control measures, procedures and Safe Systems of Work.
- Ensuring that the management of the policy, procedures, Safe Systems of Work and control measures relating to work in schools and nurseries is undertaken by competent, trained personnel.
- Providing and using safe learning equipment for children and staff and where required, personal protective equipment.
- Ensuring that risk assessments are completed by competent, trained personnel.
- Providing and recording relevant training.
- Monitoring and reviewing our systems; using our experience of operating these arrangements we aim to make improvements to the way we manage the risks associated with work in schools and nurseries.

The personnel responsible for the above measures are identified within the Responsibility Table of our Health and Safety Policy.

Safety Arrangement 6-16

SCHOOLS AND NURSERIES

Action Plan

To protect children and our workers from the hazards encountered in schools and nurseries we need to:

1. Assess the work involved and identify areas where children and others could be harmed.
2. Identify the control measures already in place and any additional measures that may be required.
3. Consider;
 - a. Security of premises (CCTV, access / egress / pick-up and drop-off arrangements).
 - b. Facilities used – are they clean, safe and well-maintained?
 - c. Possibility of verbal / physical abuse from children / parents.
 - d. Equipment used (computers, sports equipment etc.) – is it maintained, safe and regularly tested where necessary?
 - e. Contact with hazardous substances such as cleaning materials, chemicals in scientific lessons etc.
 - f. Hazards regarding exposure to contagious illnesses suffered by children.
 - g. Accident / injury procedures (contacting parents / emergency services etc.)
 - h. Biological hazards from bodily fluid contact (e.g. during an accident).
4. Keep a written record of significant risk assessments and the control measures and systems of work adopted.
5. Make sure relevant senior members of staff understand the procedures and arrangements. Consider whether they need any training.
6. Implement the procedure and ensure it is followed in practice.
7. Monitor and review the operation of this procedure from time to time and whenever an incident occurs, make changes to the procedure identified as necessary or beneficial.

Information and advice on the control of risks from work in schools and nurseries can be found in Guidance Note 6-16.

PROJECT SAFETY FOR TRAVELLING AND MULTI-SITE WORKERS

To enhance the safety of our workforce and others, we implement effective methods to reduce the risks to those who work away from our home base at any number of different work-sites.

We ascertain, so far as we are able, the hazards and risks that will be faced at these remote work-sites so that they can be taken into account in our planning and in instructions to our workforce. We also train our workforce to be able to identify hazards and risks of which we may not initially be aware and to act accordingly, including seeking advice from managers.

We do this by:

- Nominating senior staff members to coordinate and plan work which is to be completed at other sites.
- Requesting and reviewing the suitability and adequacy of the health and safety arrangements and documentation for each location.
- Considering the hazards and assessing the risks at each site and taking them into account when preparing work instructions, procedures and method statements.
- Ensuring that our workforce is trained to recognise the hazards and risks that are likely to arise in the course of their work and know how to avoid them.
- Ensuring that our clients are aware of the procedures and risk assessments for any of our work processes that may affect them.
- Ensuring that our workers follow both our procedures and any that are required by our clients.
- Ensuring that any equipment used is inspected and tested at frequencies defined within current legislation and evidence of this can be supplied.
- Regular review of our systems and any injuries or incidents that have arisen.

The personnel responsible for the overseeing these activities and the measures above are identified within the Responsibility Table of our Health and Safety Policy.

PROJECT SAFETY FOR TRAVELLING AND MULTI-SITE WORKERS

Action Plan

To ensure the safety of our employees and others when our workforce is working away from its home-base we need to be sure that we and they are able to control any health and safety risks arising from their work. We need to;

1. Assess the hazards and risks to our workforce that may be faced whilst they are working at client premises.
2. Assess the hazards and risks to others that our presence may create.
3. Involve the workforce and clients (as appropriate) in these assessments and in the identification of effective control measures.
4. Identify the control measures already in place and any additional measures that may be required.
5. Consider among other issues;
 - a. Have we obtained sufficient information about the risks at the premises where we will be working?
 - b. Do we need to complete a pre-works site survey?
 - c. What will our employee(s) be doing? Where will they be doing it and when?
 - d. Does this them at risk? Will our processes put the client or their staff at risk?
 - e. Should we work only when the client's workforce is not present?
 - f. The presence of asbestos.
 - g. Will sufficient equipment be available to complete the work safely?
 - h. Are the workers trained and competent?
 - i. Will the workers receive site inductions and understand rules, instructions and relevant safety signs?
 - j. Who will coordinate and manage our workers whilst on site?
6. Develop procedures, practices and method statements for working on other sites; making sure that the specific hazards and risks at each site are taken into account.
7. Explain these arrangements to the workforce. Ensure they are understood and provide further training where necessary.
8. Make sure the workforce knows what to do should they face unexpected hazards and risks in the course of their work.
9. Make sure that Managers and those supervising the work understand the procedures and arrangements. Consider whether they need any training.
10. Implement the procedure and ensure that it is followed in practice.
11. Monitor and review the operation of this procedure from time to time and following any incident, injury or case of ill health, making changes to the procedure identified as necessary or beneficial.

Advice and guidance on these issues can be found in Guidance Note 7-1.

Safety Arrangement 7-2

CONTRACTOR CONTROL AND MANAGEMENT

To enhance the safety of our workforce and others, we implement effective methods to reduce the risks presented by the use of contractors and subcontractors.

We ascertain the competence of contractors and subcontractors and ensure our employees and others are adequately protected from the risks posed by situations where these groups are engaged and put systems into place to achieve this.

We do this by:

- Nominating senior staff members to coordinate and plan the selection of suitable, competent contractors or subcontractors.
- Requesting and reviewing the suitability and adequacy of the health and safety documentation submitted by the contractor or subcontractor.
- Checking the competence of contractors and subcontractors.
- Requesting a 'method statement' for the work.
- Ensuring that contractors and subcontractors adhere to their method statement and safety documentation.
- Ensuring that the contractors or subcontractors are aware of the procedures and risk assessments for any of our work processes that may affect them.
- Ensuring that contractors and subcontractors comply with our site specific company rules (**Safety Records**).
- Ensuring that any equipment used is inspected and tested at frequencies defined within current legislation and evidence of this can be supplied (**Safety Records**).
- Reviewing our own and contractors' systems.

The personnel responsible for the overseeing of contractors and subcontractors and the measures above are identified within the Responsibility Table of our Health and Safety Policy.

Safety Arrangement 7-2

CONTRACTOR CONTROL AND MANAGEMENT

Action Plan

To ensure the safety of our employees and others when we have contractors working on our premises we need to be sure of their ability to control of health and safety from their work. We need to;

1. Assess the hazards and risks to our workforce that may be created by contractors working on our premises.
2. Assess the hazards and risks to the contractors from their presence on our premises.
3. Involve the workforce and the contractors in these assessments and in the identification of appropriate control measures.
4. Identify the control measures already in place and any additional measures that may be required. Refer to manufacturers' guidance, trade guidance, published Standards, etc.
5. Consider among other issues;
 - a. What will the contractor be doing? Where will they be doing it and when?
 - b. Does this put any of our staff at risk? Will our processes put the contractor or their staff at risk?
 - c. Should the contractor work only when our workforce is not present?
 - d. What knowledge do we have of the contractor's ability to manage health and safety?
 - e. Do we need to ask them to complete a pre-contract questionnaire or a method statement for the work?
 - f. Will they provide their own equipment - do they expect to use any of ours?
 - g. Will any plant they bring on site present risk to our workforce?
 - h. Does the place where the contractors will be working need to be fenced off to protect them from our work activities or vice versa?
 - i. Are their workers trained and competent?
 - j. Will the contractor's workers understand our rules, instructions and signs?
 - k. How well the contractor manages staff working on our site.
6. Develop procedures, programmes and practices for the times when contractors are working on our premises.
7. Make sure that Managers and Supervisors understand the procedures and arrangements. Consider whether they need any training.
8. Explain these arrangements to the workforce. Ensure they are understood and provide further training where necessary.
9. Implement the procedure and ensure that it is followed in practice.
10. Monitor and review the operation of this procedure from time to time and following any incident, injury or case of ill health, making changes to the procedure identified as necessary or beneficial.

Advice and guidance on health and safety during contract work can be found in Guidance Note 7-2.